

NEW STYLE

5902

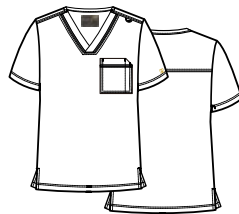
MEN'S 3-POCKET
V-NECK TOP

Men's V-neck top. Dyed-to-match functional utility loop at the shoulder. One chest pocket with a pen slot. Two front patch pockets with decorative triple stitch. Back yoke for added style and shape. Side vents.

Reg: XS - XL (M): 30.25"
Plus: 2XL - 3XL (M): 30.25"



5901

MEN'S CONTRAST
PIPING V-NECK TOP

Men's V-neck top. One chest pocket with a pen slot. Dyed-to-match functional utility loop at the shoulder seam. Decorative contrast piping at front neckband and chest pocket. Decorative double stitches by using thick thread. Back yoke. Side vents.

Reg: XS - XL (M): 30.25"
Plus: 2XL - 3XL (M): 30.25"

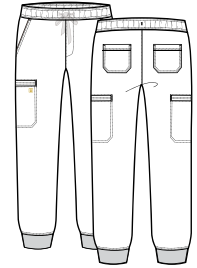


NEW COLOR



NEW STYLE

8902

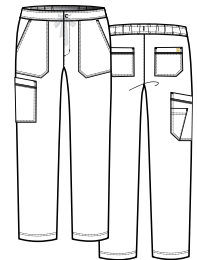
MEN'S FULL
ELASTIC WAISTBAND
JOGGER PANT

Men's full elastic waistband jogger pant. Dyed-to-match inner drawstring. Two front slant pockets. Two welt cargo pockets. Two back patch pockets. Dyed-to-match solid rib at the leg cuff.

Reg: XS - XL (Inseam): 29" Petite: XS - 2XL (Inseam): 26.5"
Plus: 2XL - 3XL (Inseam): 29" Tall: XS - 2XL (Inseam): 31.5"



8901

MEN'S HALF
ELASTIC WAISTBAND
CARGO PANT

Men's half elastic waistband pant with tapered leg. Dyed-to-match inner drawstring. Functional front fly with button. Two front and back angled patch pockets. One angled patch cargo pocket with additional scissor pocket. Decorative double stitches by using thick thread.

Reg: XS - XL (Inseam): 31"
Plus: 2XL - 3XL (Inseam): 31"
Short: XS - 2XL (Inseam): 28.5"



NEW COLOR

