

# YES! CHEF

BY BIZ COLLECTION

ISSUE 2









# SAY YES!

**Yes!Chef is the shorthand response in many busy kitchens – where everyone plays their part, working together to bring their best and exceed expectations in every dish.**

Much like the best kitchens, we also follow the “Yes!” ethos. Saying Yes! to designing a great looking range of functional, comfortable uniforms that are made to last.

We also share in your passion for food and know that what you wear and how you’re presented will be as important to you as the ingredients placed on every plate.

So let’s skip to dessert – let’s get creative, let’s dress your team in some fresh gear with a sense of fun, colour and flair.

To that we say, **Yes!Chef**



**YES!**  
CHEFWEAR



**Made To Work.**

These pieces are a staple in every kitchen. Classic, well-fitting professional gear that always performs and never looks out of place. Tried and tested and made to work as long and hard as you do.



# ALFRESCO NEW



## Alfresco Chef Jacket

65% Certified Recycled PET Polyester,  
35% Cotton Twill, 160gsm, UPF Rating 50+

CH330ML Mens L/S, XS - 4XL

CH330MS Mens S/S, XS - 4XL

CH330LL Womens L/S, XS - 2XL

CH330LS Womens S/S, XS - 2XL

- Concealed zip front closure delivers a clean minimalist look
- Lightweight twill cloth with underarm mesh ventilation keeps you cool where you need it most
- Mandarin collar with apron tab to hold apron in place
- 2 Sleeve thermometer/pen pockets
- Long length with side splits for ease
- Long sleeve style features roll-up sleeve function with inside tab and button



BLACK

WHITE

GREY SMOKE





Keep it cool and efficient in the kitchen with this lightweight, zip front chef jacket. Made from cotton and recycled yarn that's both durable and comfortable.





# AL DENTE



Not too heavy, not too light, a classic double-breasted, long sleeve chef jacket is the timeless choice for all culinary professionals.



## Al Dente Chef Jacket

65% Polyester 35% Cotton Twill  
220gsm, UPF Rating 50+

CH230ML Mens, XS - 4XL

CH230LL Womens, XS - 2XL

- Traditional double-breasted front
- Full length sleeve with turn back cuffs
- Mandarin collar with apron tab
- 2 x sleeve thermometer or pen pockets
- Matching plastic stud buttons
- Long length with side splits for ease



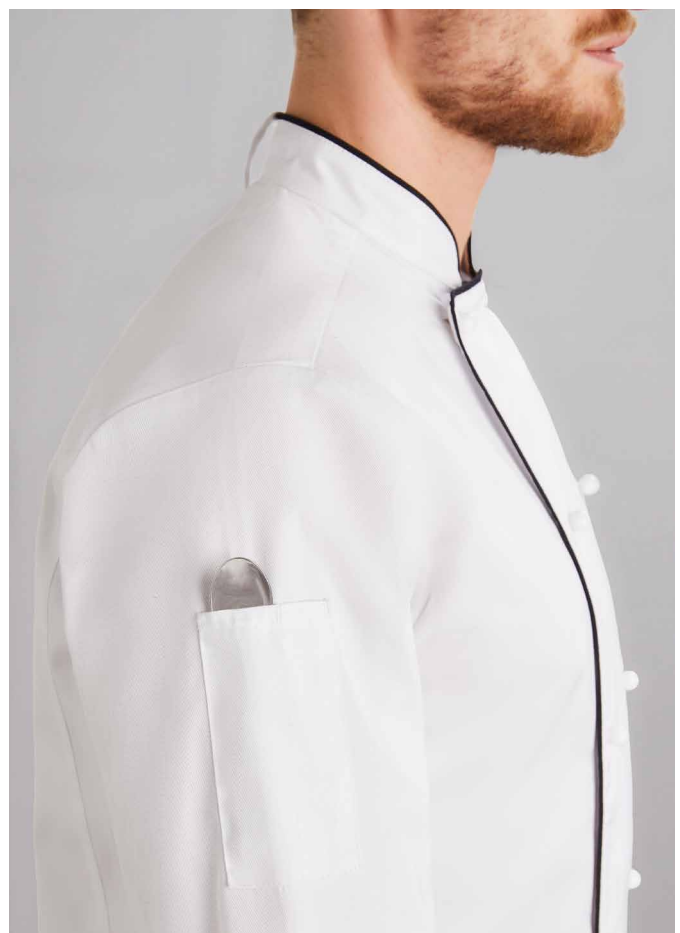
BLACK



WHITE

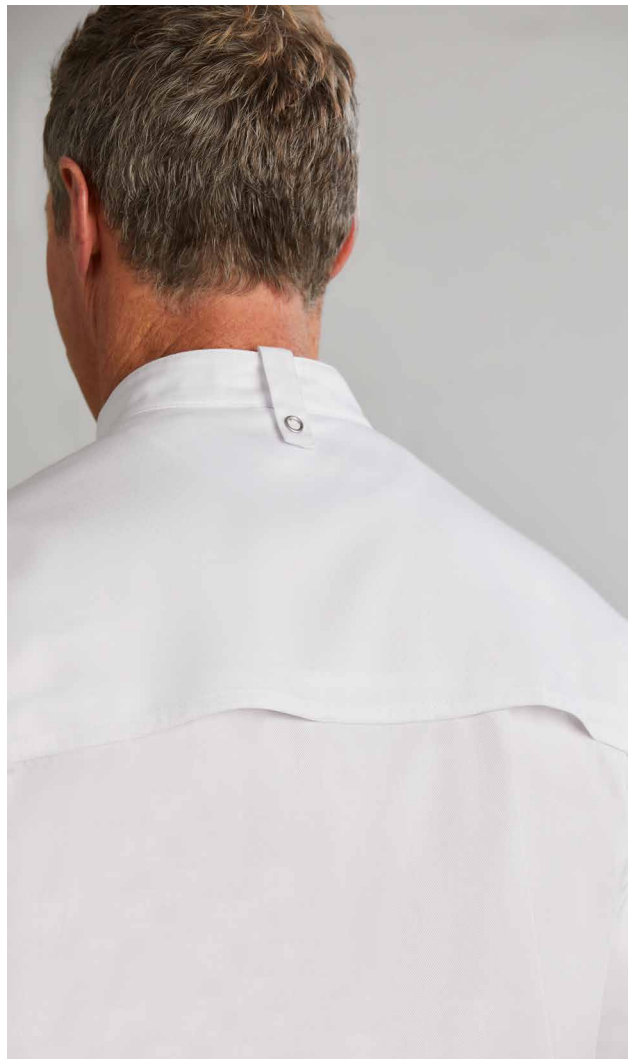


WHITE/BLACK  
(MENS ONLY)



# ZEST

Snap front, lightweight and air-vented – this jacket has all the essential ingredients to keep you cool and comfortable in the most demanding of environments.



## Zest Vented Chef Jacket

65% Polyester 35% Cotton Twill  
180gsm, UPF Rating 50+

CH232ML Mens L/S, XS - 4XL  
CH232MS Mens S/S, XS - 4XL  
CH232LS Womens S/S, XS - 2XL



- Lightweight with vented back mesh panels
- Underarm mesh inserts for added airflow
- Snap-front double-breasted style
- Short or long sleeve with turn back cuff
- Mandarin collar with apron tab
- 2 x sleeve thermometer or pen pockets
- Long length with side splits for ease







# SALSA NEW

From front of house to back, this 100% cotton, functional chef shirt works hard while you look cucumber-cool in this effortless style.



## Salsa Chef Shirt

100% Cotton Twill,  
154gsm, UPF Rating 50+

CH329MS Unisex, XS - 4XL



- Lightweight cotton is durable and naturally breathable
- Minimalist collar design with button tab
- Button through shirt with chest pocket
- One sleeve thermometer/pen pocket
- Long length with curved hem



# DASH

Comfort was key in designing these everyday work pants for kitchen professionals everywhere. Made to move, these are the go-to pant for a relaxed casual look.



## Dash Modern Chef Pant

65% Polyester 35% Cotton Twill  
180gsm, UPF Rating 50+

CH234M Mens, XS - 4XL

CH234L Womens, XS - 2XL



- Modern loose-fit pull-on style
- Wider elasticated waistband with drawstring
- 2 x deep side pockets and 2 x back patch pockets
- Dedicated Womens or unisex mens fit options
- Full length with straight hem for easy alterations





# FLAT TOP HATS



## Flat Top Chef Hat

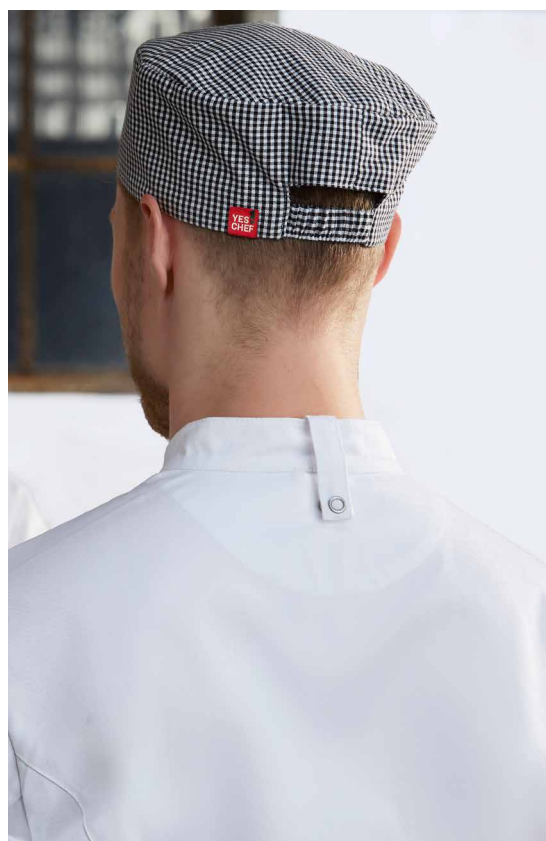
65% Polyester 35% Cotton Twill  
180gsm, UPF Rating 50+

CH238 Unisex, One Size

- Versatile chefs cap with a wide band and flat top
- Elasticated back band for a comfortable fit



The go-to hat for many chefs.  
This classic flat top style  
has an elasticated back for a  
comfortable all day fit.





Keep a cool head in any situation with this ventilated mesh topped hat.



**NEW**

## Mesh Flat Top Chef Hat

65% Polyester 35% Cotton Twill,  
Trim: 100% Polyester Mesh  
180gsm, UPF Rating 50+

CH333 Unisex, One Size

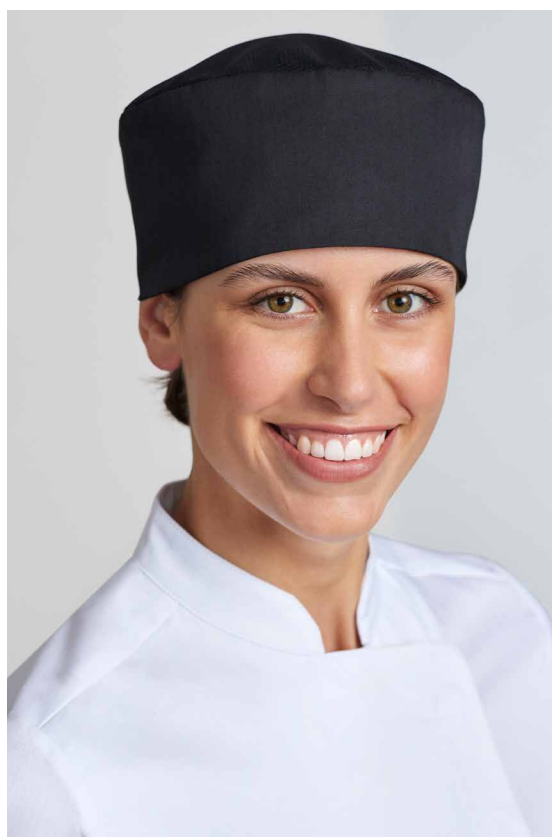
- Classic flat top shape with mesh panel to allow air-flow
- Wide band with elasticated back for a comfortable fit



BLACK



WHITE



# BANDANAS

NEW



## Chef Bandana

65% Certified Recycled PET Polyester,  
35% Cotton Twill

CH331 Unisex, One Size

- Ergonomically shaped headband with elastic at back to keep it in place
- Adjustable self-ties for a customisable fit

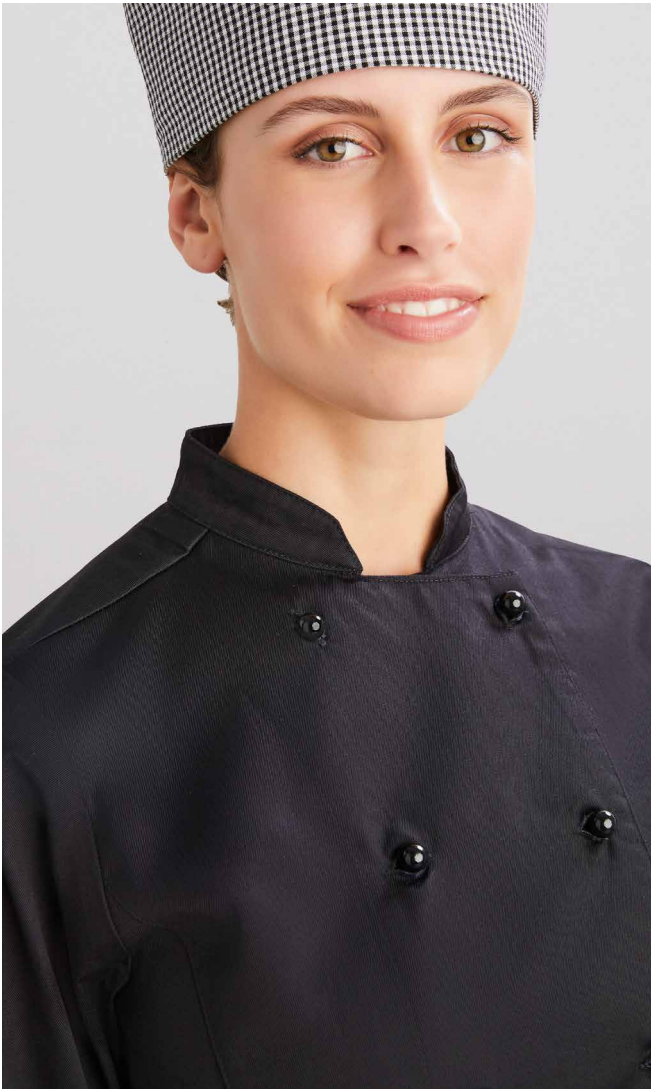


BLACK WHITE GREY SMOKE RED

Fight the fringe with this streetwear inspired bandana headband that helps keep sweat at bay and your focus where it should be.

# BUTTONS

Replacement stud buttons for your classic chef's jacket.



## Jacket Stud Chef Buttons

100 pieces

CH235 Buttons

- Interchangeable stud buttons
- Suitable for traditional button front chef jackets
- Supplied as 100 pcs per order





**YES!**  
APRONS







**Who doesn't love a great apron!**

Our curated range of mix & match apron styles, with great colours and exclusive design details, is the perfect foundation for personalising your look.







# BARLEY NEW

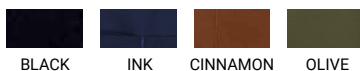


## Barley Bib Apron

80% Certified Recycled PET Polyester,  
20% Cotton Canvas, 250gsm

BA35 Bib, 85cm x 73cm

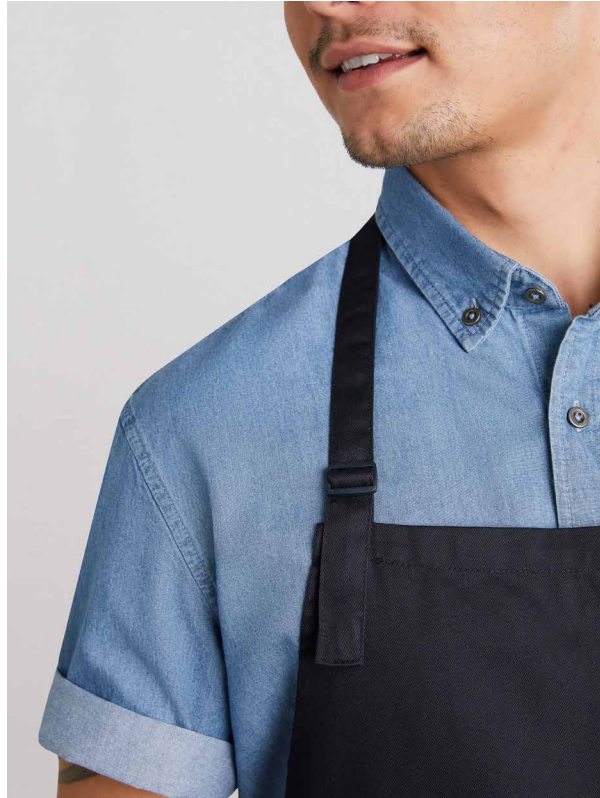
- Classic bib apron style with adjustable neck strap
- No-fade durable canvas twill, tested to 100 washes
- Simple tone on tone polyester/cotton herringbone straps with reinforced stitching for durability
- Large split front pocket to hold POS or order pen/pads



With beauty in its simplicity,  
our Barley apron is made  
from no-fade, durable canvas  
that doesn't compromise  
your uniform style.

# COLOURED BIB

This classic bib style apron is as practical as it is good-looking. Choosing a vibrant bold colour is a great way to hallmark your business and make a recognisable statement.



## Coloured Bib Apron

65% Polyester 35% Cotton Twill, 190gsm

BA95 Bib, 97cm x 86cm

- Uniquely styled Bib apron with adjustable halter self fabric strap around neck
- Towel loop at back of apron
- 1 Large central front pocket with special side slide pen and bottle opener provision



BLACK CHARCOAL WHITE NAVY



ROYAL RED FOREST CHOCOLATE



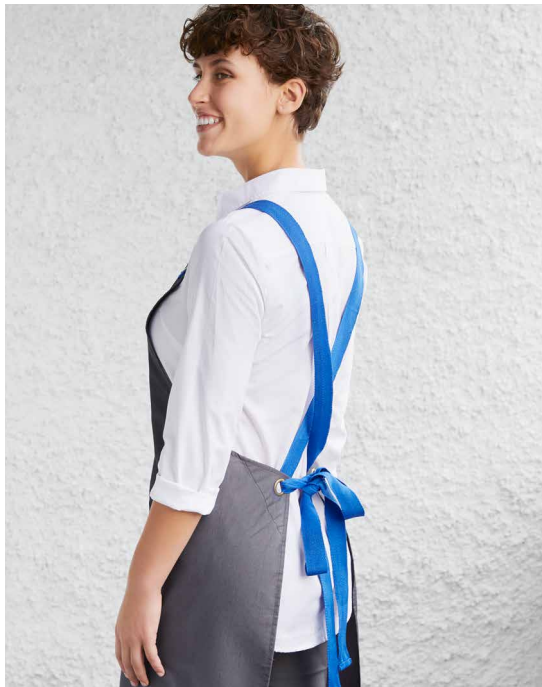
LIME ORANGE STONE







# URBAN BIB



## Urban Bib Apron

50% Cotton 50% Polyester  
Textured Fabric, 185gsm

BA55, 80 x 90cm

- Divided front pocket
- Comes with removable self-fabric X-back straps
- Reinforced stitching and antique brass fittings

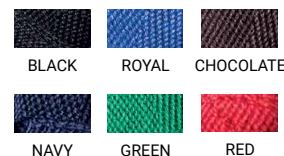


## Urban BiB Apron Straps

100% Polyester Twill Tape

BA52, 148cm

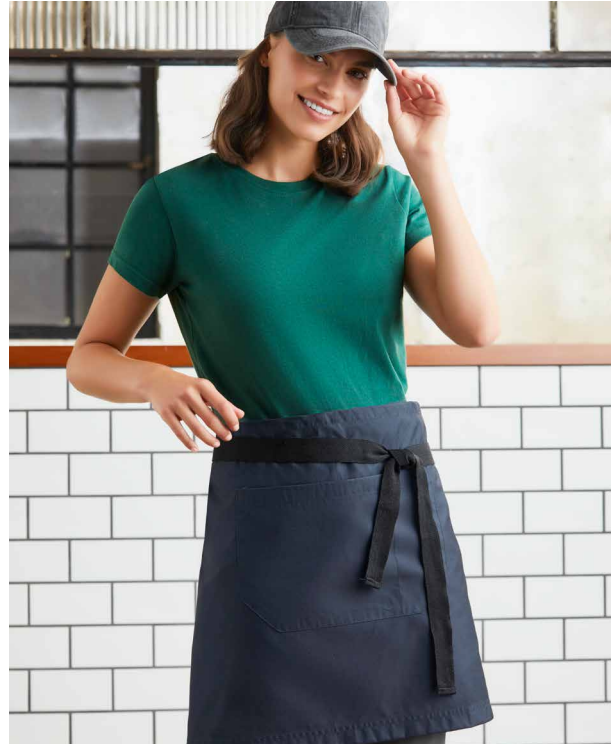
- Interchangeable straps for use with Urban Bib Apron
- Matching antique brass fittings
- Straps come packaged in pairs



Serve up some street cool style with these aprons. Crafted from durable denim textured fabric & finished with brass hardware. Personalise your look with interchangeable X-back straps!



# URBAN WAIST



## Urban Waist Apron

50% Cotton 50% Polyester  
Textured Fabric, 185gsm

BA54, 80 x 44cm

- Divided front pocket
- Comes with removable self-fabric waist straps
- Reinforced stitching and antique brass fittings



BLACK SLATE NATURAL DENIM

## Urban Waist Apron Straps

100% Polyester Twill Tape

BA51, 90cm

- Interchangeable straps for use with Urban Waist Apron
- Matching antique brass fittings
- Straps come packaged in pairs



BLACK ROYAL CHOCOLATE  
NAVY GREEN RED



Perfect for daily use, a short waist apron is swift and smart. Earthy colours and brass hardware designed to blend with any décor. Interchangeable coloured straps to create your own signature style.





# SALT

Seasoned to perfection.  
Our broad striped Salt apron is made from 100% textured cotton giving a grounded handmade vibe. It's a look that stays as fresh and crisp as the day it was made.



## Salt Bib Apron

100% Cotton, 240gsm

BA75, 93 x 70cm



CHARCOAL/  
WHITE STRIPE

- Unique chambray statement stripe apron
- Contrast divided front pocket with reinforced stitching
- Attached straps with adjustable D-ring neck loop



# PEPPER

These essential black aprons are durable, colourfast and functional. Choose from the classic short waist or the feature-packed continental style. Looking great during service has never been so easy.



## Short Waisted Apron

65% Polyester 35% Cotton Twill, 190gsm

BA94, 86 x 50cm

- Uniquely styled Short waisted above the knee length
- Towel loop at back of apron
- 1 Large central front pocket with special side slide pen and bottle opener provision



BLACK



## Continental Apron

65% Polyester 35% Cotton Twill, 190gsm

BA93, 86 x 86cm

- Full length style with refined fold-over waist
- Central stride split for ease of movement
- Towel loop at back of apron
- Central front pocket with provisions for pen/bottle opener



BLACK



**YES!**  
UNIFORMS





**From fine dining to behind the bar.**

We have all the uniform gear you need to support your crew. Here's just a small selection to get your creative juices flowing!



# TEES & POLOS

## Ice Tee

TOP LEFT

T10012 Ice Tee, Kelly Green

Worn with

BS724M Lawson Chino Pant, Black

## Ice Polo

BOTTOM LEFT

P112LS Ice Polo, White

Worn With

BA94 Short Waisted Apron, Black

## Edge Polo

BOTTOM RIGHT

P305MS Edge polo, Black

worn with

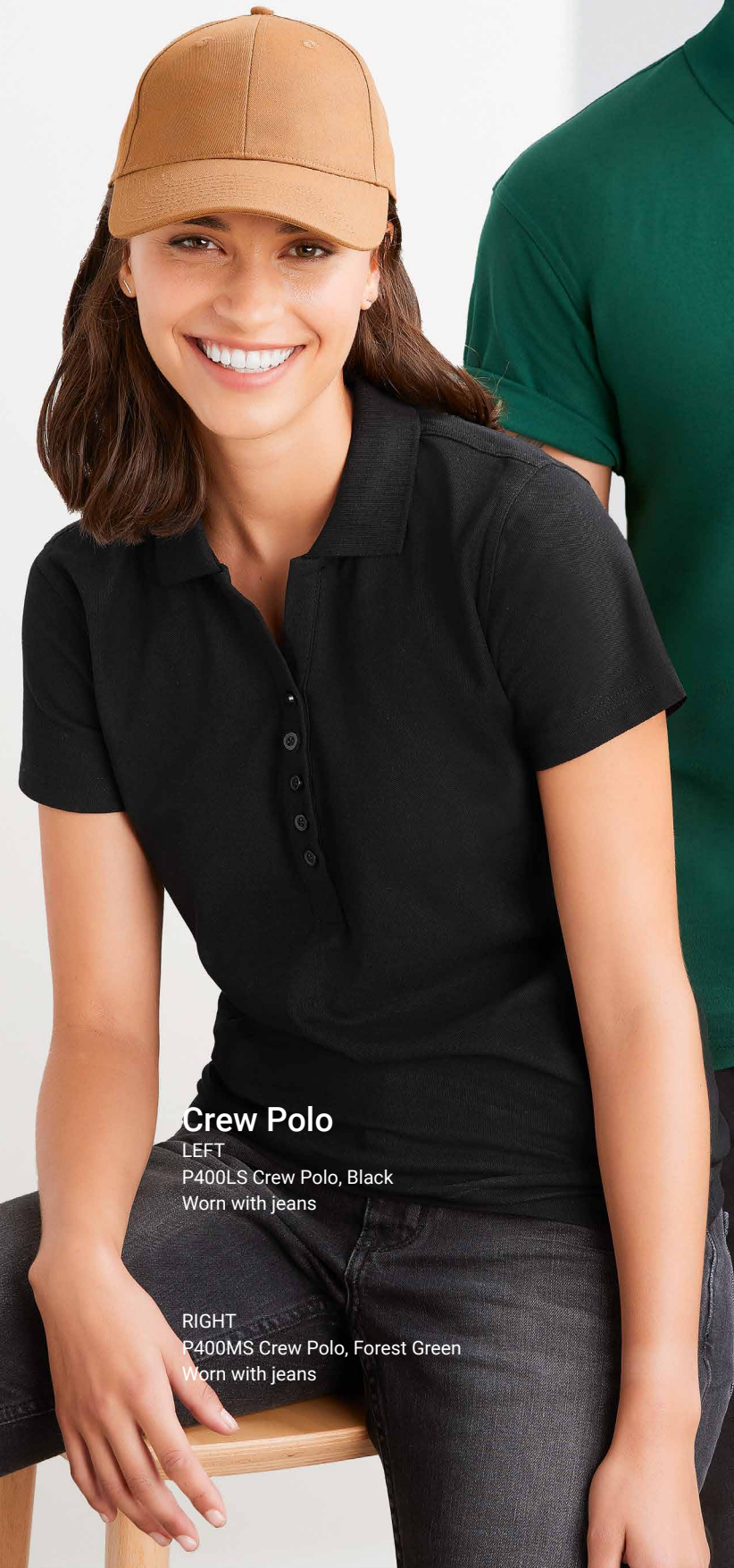
BA54 Urban ½ Waist Apron, Slate

BA51 Urban Waist Straps, Black





Affordable, durable, and always ready to go - our casual polos and tees are the service staple of foodie folk from all walks of life.



**Crew Polo**

LEFT

P400LS Crew Polo, Black

Worn with jeans

RIGHT

P400MS Crew Polo, Forest Green

Worn with jeans







**Indie Shirt**  
**Bella legging Pant**

LEFT

S017LS Indie S/S Shirt, Blue

Worn with

BS125L Bella Pant, Black

**Memphis Shirt**  
**Lawson Chino Pant**

RIGHT

S127ML Memphis L/S Shirt, Black

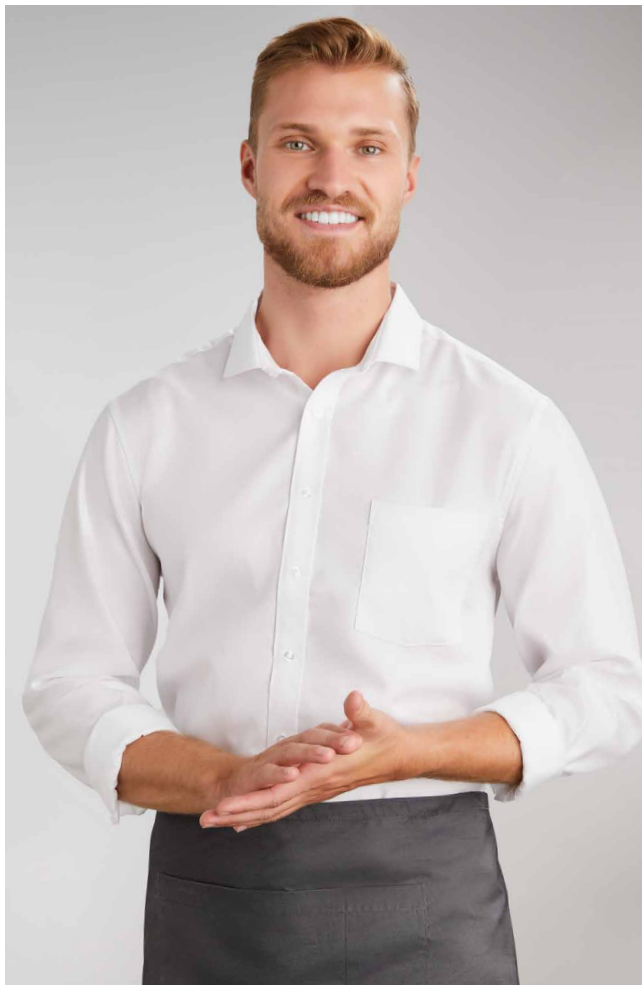
Worn with

BS724M Lawson Pant, Grey



# SHIRTS & PANTS

A smart, elevated uniform can really create a lasting impression for your business. We happily supply great looking uniforms for upmarket hospitality and hotels across the country.



## Regent Shirt

S912ML Regent L/S Shirt, White  
Worn With BA54 Urban ½ Waist Apron, Slate



## Madison Boat Neck Blouse

S828LL Madison Boat Neck Blouse, Black  
Worn with BS724L Lawson Pant, Grey

# STYLE TASTING MENU

## Chefwear

### ALFRESCO CHEF JACKET

100% Cotton Twill  
154gsm, UPF Rating 50+

CH330MS Mens S/S, XS - 4XL  
CH330ML Mens L/S, XS - 4XL  
CH330LS Womens S/S, XS - 2XL  
CH330LL Womens S/S, XS - 2XL



### AL DENTE CHEF JACKET

65% Polyester 35% Cotton Twill  
220gsm, UPF Rating 50+

CH230ML Mens, XS - 4XL  
CH230LL Womens, XS - 2XL



### ZEST VENTED CHEF JACKET

65% Certified Recycled PET Polyester,  
35% Cotton Twill  
160gsm, UPF Rating 50+

CH232ML Mens L/S, XS - 4XL  
CH232MS Mens S/S, XS - 4XL  
CH232LS Womens S/S, XS - 2XL



### SALSA CHEF SHIRT

100% Cotton Twill  
154gsm, UPF Rating 50+

CH329MS Mens S/S, XS - 4XL



### DASH MODERN CHEF PANT

65% Polyester 35% Cotton Twill  
180gsm, UPF Rating 50+

CH234M Mens, XS - 4XL  
CH234L Womens, XS - 2XL



### FLAT TOP CHEF HAT

65% Polyester 35% Cotton Twill  
180gsm, UPF Rating 50+

CH238 Unisex, One Size



### MESH FLAT TOP CHEF HAT

65% Polyester 35% Cotton Twill  
Trim: 100% Polyester Mesh  
180gsm, UPF Rating 50+

CH333 Unisex, One Size



### CHEF BANDANA

65% Certified Recycled PET Polyester,  
35% Cotton Twill  
180gsm, UPF Rating 50+

CH331 Unisex, One Size



### JACKET STUD CHEF BUTTONS

CH235 Buttons, 100 pieces



## Aprons

### BARLEY BIB APRON

80% Certified Recycled PET Polyester,  
20% Cotton Canvas, 250gsm

BA35 Barley Bib, 85cm x 73cm



### COLOURED BIB APRON

65% Polyester 35% Cotton Twill, 190gsm

BA95, Coloured Bib 97 x 86cm

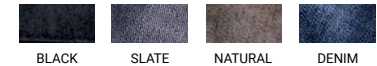


### URBAN APRONS

50% Cotton 50% Polyester  
Textured Fabric, 185gsm

BA55 Urban Bib, 80 x 90cm

BA54 Urban Waist, 80 x 44cm



### URBAN STRAPS

100% Polyester Twill Tape

BA52 Urban Bib Straps, 148cm

BA51 Urban Waist Straps, 90cm



### SALT BIB APRON

100% Cotton, 240gsm

BA75 Salt Bib, 93 x 70cm



### PEPPER APRONS

65% Polyester 35% Cotton Twill, 190gsm

BA94 Short Waisted, 86 x 50cm

BA93 Continental, 86 x 86cm





# Uniform Essentials

## ICE TEE

100% Premium Combed Cotton

T10012 Mens, S - 3XL, 5XL

T10022 Womens, 6 - 24



## CREW POLO

65% Polyester 35% Cotton Pique  
Low-pill Yarn, 210gsm

P400MS Mens, S - 3XL, 5XL

P400LS Womens, 8 - 24



## ICE POLO

100% Premium Combed Cotton  
185gsm

P112MS Mens, S - 3XL, 5XL

P112LS Womens, 8 - 24



## EDGE POLO

65% Polyester 35% Cotton, 210gsm  
Low Pill Pique Knit

P305MS Mens, S - 3XL, 5XL

P305LS Womens, 6 - 24



## MEMPHIS SHIRT

60% Cotton 40% Polyester  
Pre-shrunk plain oxford weave

S127ML Mens, XS - 5XL

S127LL Womens, 6 - 26



## INDIE SHIRT

100% Cotton Denim, 160gsm

S017MS/S01716ML Mens, XS - 3XL

S017LS/S01716LL Womens, 6 - 20



## REGENT SHIRT

Wrinkle resistant 100% Premium  
Cotton Yarn dyed herringbone weave

S912MS/S912ML Mens, XS - 5XL

S912LS/S912LL/S912LT

Womens, 6 - 24



## MADISON BLOUSE

100% Polyester Mechanical Stretch  
Wrinkle resistant with flattering drape

S828LL Womens Boatneck, 6 - 26

S628LS Womens S/S, 6 - 26

S627LN Womens Sleeveless, 6 - 20

S626LL Womens L/S, 6 - 26



## LAWSON CHINO PANT

98% Cotton 2% Elastane stretch  
250gsm

BS724M Mens, 72R - 127R

BS724L Womens, 6 - 26



## BELLA LEGGING PANT

Cotton-Rich Stretch 52% Cotton  
41% Viscose 7% Elastane

BS125L Womens, XS - 3XL



Just a small taste of  
all we have on offer!  
To see our full product  
selection, visit our  
website.



**Yes!Chef**

A brand of culinary apparel brought to you by the trusted makers of Biz Collection.

