

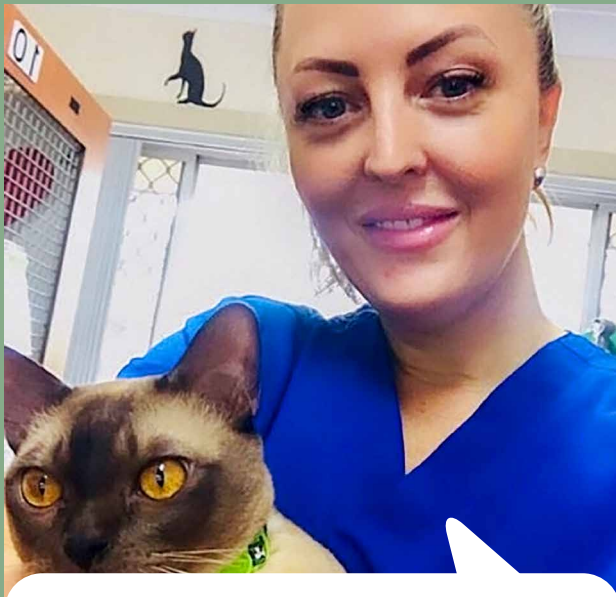


bizcare

ISSUE 5 . 2023 / 2024

STORIES FROM THE BIZ CARE COMMUNITY

Read what Care professionals around Australia and New Zealand have to say about their Biz Care uniform.

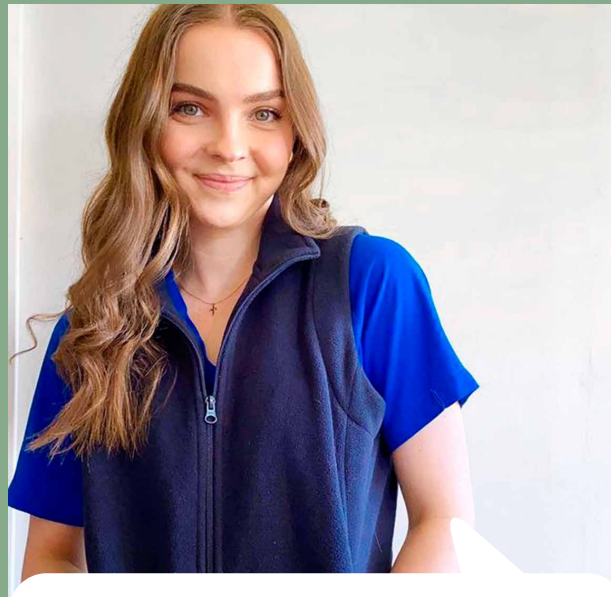


Hannah Jayne
Veterinary Nurse

As a busy vet nurse, having scrubs that fit, look good and are comfortable is hard to find. But my Biz Care scrubs are exactly that.

Plus they don't collect animal hair throughout the day, making laundry day a breeze.

Thanks Biz Care!



Nurse Molly
[@nursemollyphoebe](#)

I love Biz Care products and scrubs, I always feel neat and tidy at work and know that they can go through anything the ward throws at me and will still look amazing after a good wash!



SASH
Small Animal Specialist Hospital

It's never a boring day working in Australia's largest specialist and 24/7 emergency veterinary hospital. Thank goodness for scrubs - they are so easy to wear. They are lightweight, comfortable, durable, and look professional - exactly what we need when handling animals and seeing clients. Highly recommended.



Elms Court Village
Retirement Village

With our Biz Care uniforms, we can be sure that our team always looks professional while caring for our residents. These uniforms offer everything we need - they are high quality, comfortable and easy to maintain.



K9HQ
Veterinarian Services

We love our Biz Care scrubs - the animal hair does not stick to it, lots of pockets, washes well and dries so quickly - and comfortable!



Nurse Hannah
@thatnursehannah

Biz Care have got me covered when it comes to comfort and style.

I live in my grape Riley scrubs- the vibrant colour cheers my patients up. I also love my navy Averys - they honestly feel like I'm wearing silky soft pajamas.

HOW TO BUILD YOUR TEAMS NEW LOOK

First impressions count, especially when your business is service based. A good-looking uniform not only elevates your brand amongst your competitors but also fosters increased morale and productivity among your staff.

Our catalogue is designed to make building your team's new uniform easy in 4 simple steps.

BEFORE



1

**IDENTIFY DEPARTMENTS
AND/OR JOB ROLES
REQUIRING UNIFORM**

Colour-coding apparel for different departments can be helpful markers for your clientele. Refer to pages 8 - 21 for a snapshot of team dressing by colour story.

2

**PICK STYLES AND FABRICS
BASED ON JOB ROLES
AND FUNCTIONS**

Our entire range is designed to cater for both functional and non-functional roles. Available in a range of fabrics and styles to suit all budgets, body shapes and climates.

3

**ALLOCATE ENOUGH
PIECES FOR EACH OF
YOUR TEAM**

Providing the right allocation ensures staff have enough pieces to last them through their working week and increases the longevity of garments.

4

**READY TO
ORDER?**

Get in touch with our uniform specialists who can review your requirements and suggest the perfect uniform solution for your team.

AFTER



A STEP IN THE RIGHT DIRECTION

We're committed to designing and manufacturing ethical and sustainable healthcare attire. At the core of our business is a long-standing commitment to ethical trading. We believe that businesses can be both profitable and responsible.

At Biz Care, we like to think of ourselves as masters of the tiniest details. From sourcing fabrics, to ensuring all our health wear designs are rigorously tested in dedicated laboratories and trialled on real workers to make sure we get the fit and functionality just right.

Biz Care garments have been designed to easily coordinate with the Biz Collection range to ensure everything works perfectly together providing a complete uniform solution.



INNOVATIVE QUALITY IS AT THE HEART OF ALL WE DO

Our experienced team of designers, researchers and technicians are dedicated to sourcing innovative fabrics and processes. Before we release any new product, we perform rigorous testing and evaluation, both in-house and in the workplace. Our garments are fitted on real people, not mannequins, and we conduct wear trials with customers in the field to guarantee they're fit for purpose, comfort and durability.



MORE CHOICES FOR EVERY BODY

We're the first to recognise that one size doesn't fit all, that's why we offer a vast range of styles, sizes and fabrics to suit all body shapes, industries and functional needs. We've created products that can be mixed and matched, catering for different work streams, job roles and also allowing each wearer to feel comfortable in their workwear.



DELIVERING ON OUR PROMISE OF CARE

With a team of local staff in most states and at the ready to take your call, customer service is a natural extension of everything we do. Our library of fit ranges in some states is available to help you effortlessly conduct fittings and borrow samples easily and efficiently.

Because we hold stock in multiple warehouses across Australia and New Zealand, we can ensure your orders are processed, picked and dispatched quickly and efficiently.



WE BELIEVE IN CORPORATE SOCIAL RESPONSIBILITY

We're proud of our parent company Fashion Biz's commitment to sourcing products and services in an ethically responsible manner. We consider the welfare of workers, health and safety and potential environmental impacts.

Our Ethical Sourcing Policy is primarily based on conducting business ethically, manufacturing responsibly and demonstrating environmental consciousness. We choose our partners carefully, with factories across India, China and Bangladesh which must adhere to international manufacturing standards, these may include:



Ethical Trade Initiative Base Code (ETI)



Supplier Ethical Data Exchange (Sedex) ETI/SMETA



Ethically Correct Certified Company SA 8000



Worldwide Responsible Accredited Production (WRAP)



Business Social Compliance Initiative (BSCI)



Textile Exchange's Global Recycled Standard (GRS)



Quality Approved ISO 9001

ISO 9001 Certification



Fashion Biz Ethical Sourcing Policy

We're making it a priority to change our product life cycle for the better. That means growing a better future for both our customers and the planet.

06. GO PINK

08. TEAM DRESSING

24. SHIRTS, T-TOPS & POLOS

34. FUNCTIONAL LOWERS

42. CARE SCRUBS

60. LAB COATS

62. ACCESSORIES

66. HEALTH & BEAUTY

68. KNITWEAR & OUTERWEAR

BIZ CARE IS GOING PINK



In partnership with NBCF, Biz Care has released a range of pink products that will be sold via Fashion Biz distributors with a portion of sales funding breast cancer research in Australia.

This partnership is being driven through exclusive garments created in alignment with the National Breast Cancer Foundation.





UNISEX PINK V-NECK SCRUB TOP

FABRIC COMPOSITION
96% Polyester
4% Elastane

CARE INSTRUCTIONS
Can be washed at 60°C. Do not bleach, soak or tumble dry. Line dry in shade.



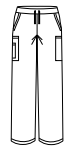
CST250US
Unisex Pink V-Neck Scrub Top
XXS - 6XL
Unisex fit - women may wish to size down for a fitted look



UNISEX PINK SCRUB PANT

FABRIC COMPOSITION
96% Polyester
4% Elastane

CARE INSTRUCTIONS
Can be washed at 60°C. Do not bleach, soak or tumble dry. Line dry in shade.



CSP102UL
Unisex Pink Scrub Pant
XXS - 6XL



PRINTED PINK SCRUB CAP

FABRIC COMPOSITION
100% Cotton

CARE INSTRUCTIONS
Gentle machine wash. Wash with similar colours. Do not bleach or soak. Tumble dry on low or line dry in shade.



CSC246U
Unisex Pink Scrub Cap
One Size



HAPPY FEET PINK SOCKS

FABRIC COMPOSITION
41% Cotton 28% Nylon
26% Polyester
5% Elastane

CARE INSTRUCTIONS
Warm machine wash inside out.



CCS250U
Unisex Pink Comfort Socks
S, M, L





PURPLE

Modern and eye-catching, our purple adds richness and depth to your wardrobe without being overly vivid.

Try pairing with navy, charcoal, black or white.

FEATURED - LEFT TO RIGHT

1. **CS950LS** Daisy Print Florence Tunic
CL040LL Jane 3/4 Pant
2. **CS947LS** Florence Shirt **CL956LS** Cargo Skirt
3. **CST043MS** Riley Scrub Top
CSP047ML Riley Straight Leg Scrub Pant
4. **CST043LS** Riley Scrub Top
CSP047LL Riley Straight Leg Scrub Pant
5. **CS952LS** Marley T-Top **CL955LL** Straight Leg Pant
6. **CS949LS** Florence Tunic **CL953LL** Slim Leg Pant





NAVY

Navy is a staple colour in any health wardrobe. Best worn with black or navy lowers.

FEATURED - LEFT TO RIGHT

1. **S770MS** Monaco Shirt **CL959ML** Cargo Pant
2. **CST243LS** Rose Scrub Top
CSP244LL Rose Maternity Scrub Pant
3. **CS949LS** Florence Tunic **CL956LS** Cargo Skirt
4. **CS949LS** Florence Tunic **CL955LL** Straight Leg Pant
5. **CST043MS** Riley Scrub Top
CSP042ML Riley Jogger Scrub Pant
6. **CST043LS** Riley Stretch Scrub Top
CSP042LL Riley Jogger Scrub Pant
7. **CST141MS** Tokyo Scrub Top
CSP143ML Tokyo Scrub Pant
8. **CST141LS** Tokyo Scrub Top
CSP143LL Tokyo Scrub Pant
9. **CST240LS** Parks Scrub Top
CT247LL Performance Tee
CSP042LL Riley Jogger Scrub Pant **CH248L** Hijab





TEAL

Teal matches well with navy, black or charcoal in both lowers and outerwear.

FEATURED - LEFT TO RIGHT

1. **SH3603** Oasis Shirt **CL958ML** Flat Front Pant
2. **CK962LC** Zip Knit **CS948LS** Daisy Print Florence Shirt **CL954LL** Cargo Pant
3. **CS950LS** Daisy Print Florence Tunic **CL953LL** Slim Leg Pant
4. **P400LS** Crew Polo **CL956LS** Cargo Skirt
5. **CS952LS** Marley T-Top **CL041LL** Jane Pant
6. **CST945MS** Avery V-Neck Scrub Top **CSP946ML** Avery Scrub Pant



MID BLUE

Match with black, navy or charcoal lowers and outerwear.

For depth, add a secondary colour palette of white, electric blue or navy.

FEATURED - LEFT TO RIGHT

1. **SH3603** Oasis Shirt **CL959ML** Cargo Pant
2. **CS951LT** Florence 3/4 Shirt **CK045LC** Cardigan
CL956LS Cargo Skirt
3. **CS947LS** Florence Shirt **CL040LL** Jane 3/4 Pant
4. **H10622** Classic Biz Scrub Top
CT247LL Performance Tee
H10620 Classic Biz Scrub Bootleg Pant
CH248L Hijab
5. **H10612** Classic Biz Scrub Top
H10610 Classic Biz Scrub Cargo Pant
6. **CS952LS** Marley T-Top **CL041LL** Jane Pant
7. **CS949LS** Florence Tunic





CHARCOAL

A colour that will go with everything in your wardrobe and complement any skin tone.

Add depth to charcoal with contrasting colours of blue, purple or white.

FEATURED - LEFT TO RIGHT

1. **CS947LS** Florence Shirt **CL956LS** Cargo Skirt
2. **CS952LS** Marley T-Top **CL953LL** Slim Leg Pant
3. **P400LS** Crew Polo **CL953LL** Slim Leg Pant
4. **CST945MS** Avery V-Neck Scrub Top
CSP946ML Avery Scrub Pant
5. **CST941LS** Avery V-Neck Scrub Top
CSP944LL Avery Straight Leg Scrub Pant
6. **CST141MS** Tokyo Scrub Top
CSP143ML Tokyo Scrub Pant
7. **CST141LS** Tokyo Scrub Top
CSP143LL Tokyo Scrub Pant





ELECTRIC BLUE

Give your wardrobe a recharge with electric blue. Pair with navy, charcoal or black lowers and outerwear for a striking look.

FEATURED - LEFT TO RIGHT

1. **CS952LS** Marley T-Top **CL956LS** Cargo Skirt
2. **CS949LS** Florence Tunic **CL953LL** Slim Leg Pant
3. **CK961LV** Knit Vest **CS947LS** Florence Shirt **CL953LL** Slim Leg Pant
4. **CST942LS** Avery Round Neck Scrub Top **CSP944LL** Avery Straight Leg Scrub Pant
5. **CST945MS** Avery V-Neck Scrub Top **CT247ML** Performance Tee **CSP946ML** Avery Scrub Pant
6. **CST141MS** Tokyo Scrub Top **CSP143ML** Tokyo Scrub Pant
7. **CST043LS** Riley Scrub Top **CSP042LL** Riley Jogger Scrub Pant
8. **CST043MS** Riley Scrub Top **CSP042ML** Riley Jogger Scrub Pant





CHERRY

Match with black or navy lowers and outerwear.

For depth, add a secondary colour palette of white, blue or black.

FEATURED - LEFT TO RIGHT

1. **P400LS** Crew Polo **CL957LS** Cargo Short
2. **P400MS** Crew Polo **CL960MS** Cargo Short
3. **CS949LS** Florence Tunic **CL954LL** Cargo Pant
4. **CS951LT** Florence Shirt **CL953LL** Slim Leg Pant
5. **CS947LS** Florence Shirt **CL955LL** Straight Leg Pant
6. **CS952LS** Marley T-Top





BLACK

Black is a staple in any working wardrobe.

Biz Care blacks have been tested to ensure that colorfastness is the least of your worries.

FEATURED - LEFT TO RIGHT

1. **CST942LS** Avery Round Neck Scrub Top
CSP943LL Avery Slim Leg Scrub Pant
2. **CST043LS** Riley Scrub Top
CSP042LL Riley Jogger Scrub Pant
3. **CS952LS** Marley T-Top **CL956LS** Cargo Skirt
4. **P400MS** Crew Polo **CL959ML** Cargo Pant
5. **CS949LS** Florence Tunic **CL041LL** Jane Pant
6. **CST243LS** Rose Scrub Top
CSP042LL Riley Jogger Scrub Pant

FLORENCE STRETCH TOPS



LIGHT
WEIGHT

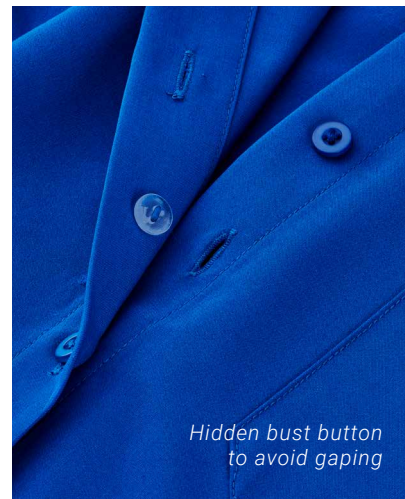
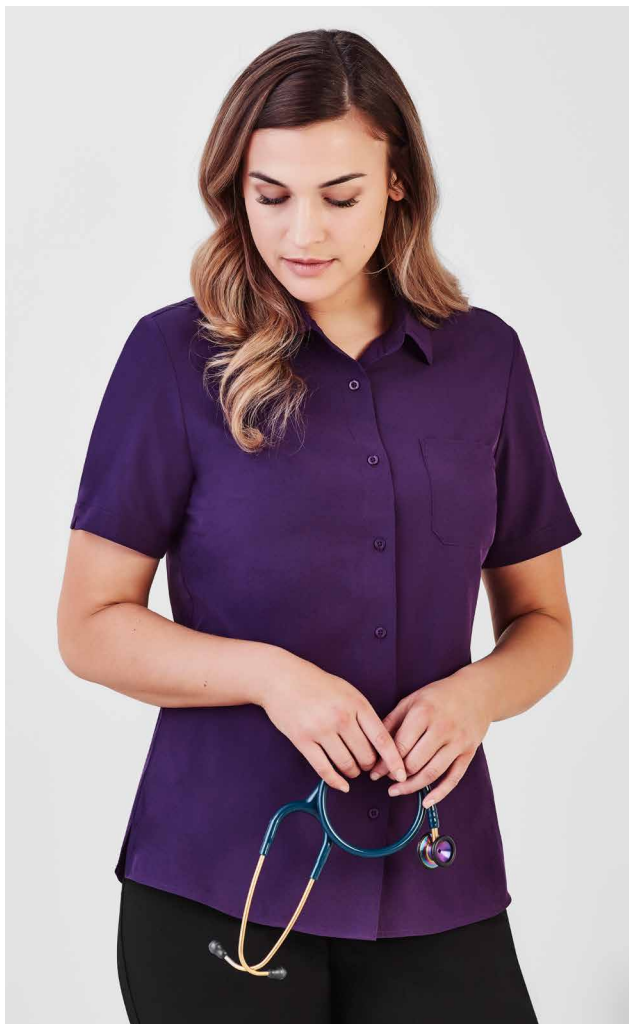


EASY
STRETCH



BREATHABLE





- NAVY
- ELECTRIC BLUE
- MID BLUE
- TEAL
- CHERRY
- CHARCOAL
- BLACK
- PURPLE

A perfect blend of style, comfort and function. The easy-care fabric is breathable, soft and lightweight; perfect for all climates. Styles feature longer hem lengths, hidden bust button (short sleeve and ¾ sleeve styles), side splits and pockets.

FABRIC COMPOSITION
CARE INSTRUCTIONS

94% Polyester 6% Elastane
Gentle machine wash. Wash inside out with similar colours.
Do not bleach, soak or tumble dry. Line dry in shade.



CS947LS
Womens
S/S Shirt
4 - 30



CS949LS
Womens
Tunic
4 - 30



CS951LT
Womens
3/4 Shirt
4 - 30

FLORENCE DAISY PRINT STRETCH TOPS



LIGHT
WEIGHT

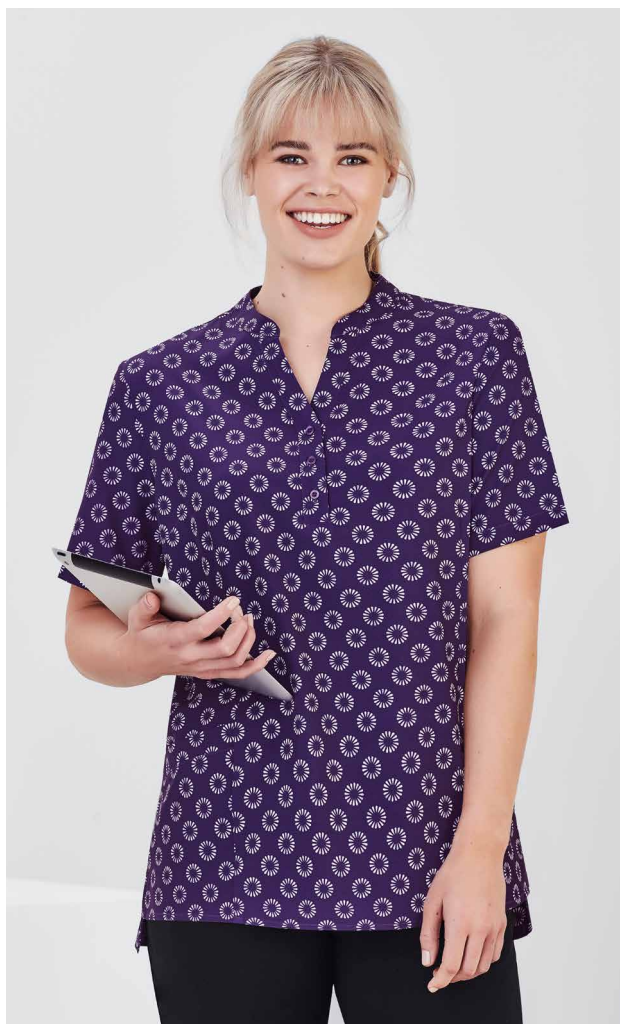


EASY
STRETCH



BREATHABLE





A perfect blend of style, comfort and function. The easy-care fabric is breathable, soft and lightweight; perfect for all climates. Styles feature longer hem lengths, hidden bust button on short sleeve style, side splits and pockets.

FABRIC COMPOSITION
CARE INSTRUCTIONS

94% Polyester 6% Elastane
Gentle machine wash. Wash inside out with similar colours.
Do not bleach, soak or tumble dry. Line dry in shade.



CS948LS
Womens Daisy
Print S/S Shirt
4 - 30



CS950LS
Womens Daisy
Print Tunic
4 - 30

MARLEY JERSEY T-TOPS



LIGHT
WEIGHT



EASY
STRETCH



BREATHABLE



NAVY

ELECTRIC
BLUE

MID BLUE

TEAL

CHERRY

CHARCOAL

BLACK

PURPLE

Our easy-care Jersey T-Top is an essential piece in any working wardrobe. The lightweight soft knit provides stretch and comfort without clinging to the body. Designed to complement all silhouettes.

FABRIC COMPOSITION CARE INSTRUCTIONS

95% Polyester 5% Elastane

Warm gentle machine wash. Wash with similar colours. Do not bleach, soak or tumble dry. Line dry in shade. Little to no pressing required.



CS952LS
Womens
S/S T-Top
XXS - 4XL



PERFORMANCE TEE

The perfect tee that can be worn as an underscrub or on its own. Made from soft cotton treated with SILVERPLUS® antibacterial protection. Added stretch allows for extra movement and comfort. Designed to sit closer to the body.

FABRIC COMPOSITION 95% Cotton 5% Elastane with antibacterial and odour protection.

CARE INSTRUCTIONS Machine wash cold, inside out with like colours on gentle cycle. Dry in shade, cool iron if required.



CT247LL
Womens
Cotton L/S Tee
XS - 3XL



CT247ML
Mens
Cotton L/S Tee
XS - 5XL

MIDNIGHT NAVY

BLACK

WHITE



LIGHT WEIGHT



EASY STRETCH



BREATHABLE



ANTI BACTERIAL

BIZ COLLECTION

OASIS SHIRTS



LIGHT WEIGHT



WRINKLE RESISTANT



Biz Collection Oasis is ideal for demanding work environments. It's soft, durable and requires little to no ironing. Made from yarn-wicked breathable polyester, providing the same cool and dry features of linen.

FABRIC COMPOSITION
CARE INSTRUCTIONS

BIZ COMFORTCOOL™ 100% Polyester
Cold gentle machine wash. Do not bleach, soak or tumble dry. Line dry in shade.



LB3601
Womens
S/S Shirt
6 - 26



S265LS*
Womens
Overblouse
6 - 30



LB3600
Womens
3/4 Shirt
6 - 26



SH3603*
Mens
S/S Shirt
S - 3XL, 5XL

*Limited colours available. See the full range of styles and colours available in the Biz Collection catalogue.

BIZ COLLECTION

MONACO SHIRTS



BREATHABLE



EASY STRETCH



Get that pristine look with this stretch cotton-rich fabric alternative. The Biz Collection Monaco is a functional and comfortable shirt range for demanding healthcare environments.

FABRIC COMPOSITION
CARE INSTRUCTIONS

68% Cotton 28% Polyester 4% Elastane
Cold gentle machine wash. Do not bleach, soak or tumble dry. Line dry in shade.



S770LS
Womens
S/S Shirt
6 - 26



S770LT
Womens
3/4 Shirt
6 - 26



S770MS
Mens
S/S Shirt
XS - 5XL

See the full range of styles and colours available in the Biz Collection catalogue.

BIZ COLLECTION

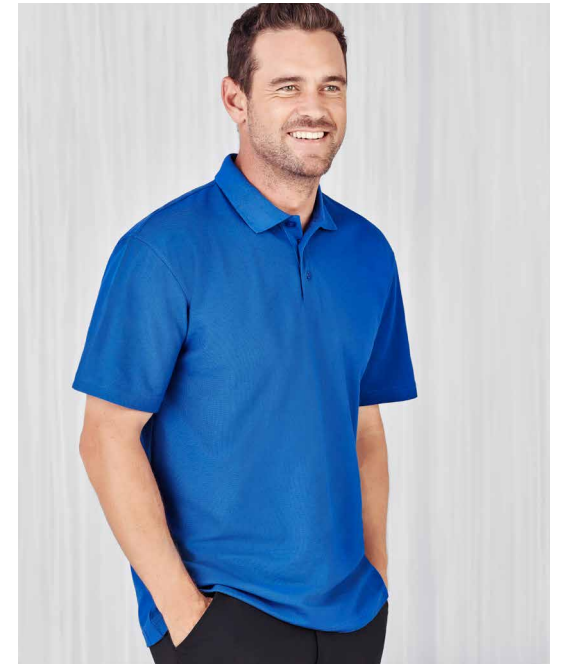
CREW POLOS



LIGHT
WEIGHT

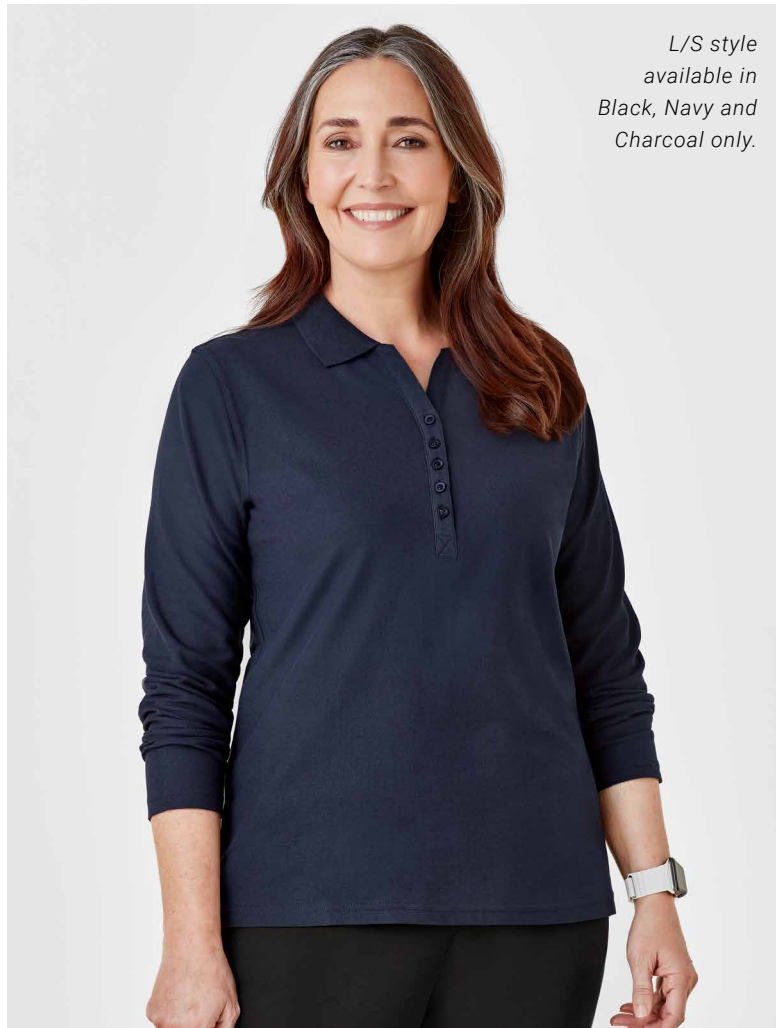


EASY
IRON





L/S style available in Black, Navy and Charcoal only.



L/S style available in Black, Navy and Charcoal only.



The Biz Collection Crew Polo is easy-care and perfect for all healthcare professionals.

FABRIC COMPOSITION
CARE INSTRUCTIONS

65% Polyester 35% Cotton Pique
Machine washable. Line dry in shade.
Do not bleach, soak or tumble dry.
Do not dry clean.



P400LS*
Womens
S/S Polo
8 - 24



P400LL*
Womens
L/S Polo
8 - 24



P400MS
Mens
S/S Polo
S - 3XL, 5XL



P400ML*
Mens
L/S Polo
S - 3XL, 5XL

*Limited colours available. See the full range of styles and colours available in the Biz Collection catalogue.

BIZ CARE FUNCTIONAL LOWERS

Designed and developed for Care professionals, the Biz Care Functional Lowers range is comfortable, breathable and durable.



BREATHABLE



EASY
STRETCH

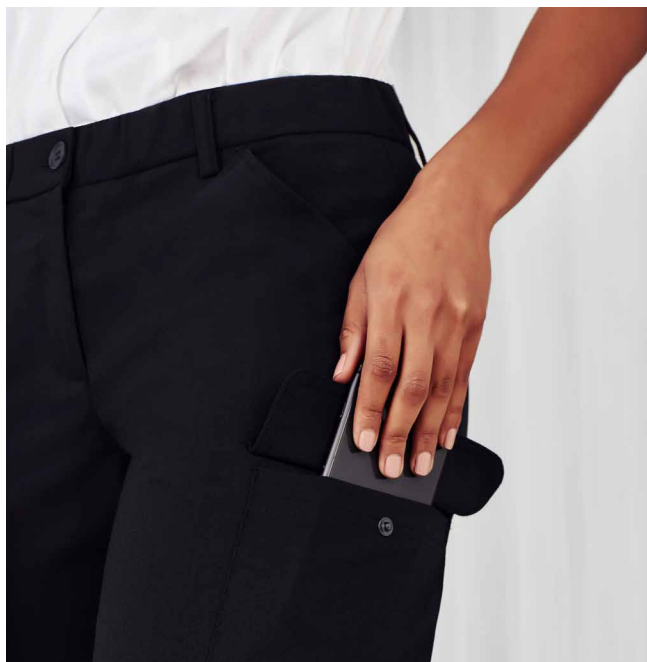


LIGHT
WEIGHT



CLEVER
STORAGE





Biz Care Functional Lowers are designed, developed, fitted and tested in Australia and New Zealand by real Care professionals to ensure our range is comfortable, stylish and fit for purpose.

FUNCTIONAL LOWERS FEATURES:

- Multiple functional and durable pockets.
- Pockets made from self-fabric to withstand sharp tools, and bar tacked to prevent pocket corners ripping.
- Streamlined pockets provide a clean and tailored appearance, and are less like industrial workwear pockets (cargo pant only).
- Roll-up pant leg option provide the flexibility of a 3/4 leg length (cargo pant only).
- Durable, hard-wearing soft fabric with added stretch for comfort and movement.
- Comfort stretch waistband that moves with you.



CL953LL Womens Comfort Waist Slim Leg Pant



CL955LL Womens Comfort Waist Straight Leg Pant



CL954LL Womens Comfort Waist Cargo Pant

WOMENS COMFORT LOWERS

Breathable, durable, and easy-care fabric. Made from a lightweight plain weave with added stretch for comfort. Comfort lower pants, shorts and skirt have a built in comfort stretch waist band, making it perfect for all functional and admin roles.

FABRIC COMPOSITION
CARE INSTRUCTIONS

64% Polyester 34% Viscose 2% Elastane
Warm gentle machine wash 40°. Wash inside out with similar colours.
Do not bleach, soak or tumble dry. Line dry in shade.
Cool iron if required.



CL956LS Womens Comfort Waist Cargo Skirt



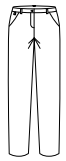
CL957LS Womens Comfort Waist Cargo Short



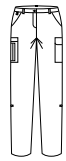
CL145LS Womens Comfort Skort



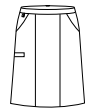
CL953LL
Womens
Slim Leg Pant
4 - 20



CL955LL
Womens
Straight Leg Pant
8 - 30



CL954LL
Womens
Cargo Pant
4 - 30



CL956LS
Womens
Cargo Skirt
4 - 30



CL957LS
Womens
Cargo Short
4 - 26



CL145LS
Womens
Skort
4 - 30
Available in Navy
and Black





CL958ML Mens Comfort Waist Flat Front Pant



CL959ML Mens Comfort Waist Cargo Pant



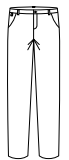
MENS COMFORT LOWERS

- NAVY
- CHARCOAL
- BLACK

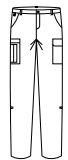
Breathable, durable, and easy-care fabric. Made from a lightweight plain weave with added stretch for comfort. Comfort lower pants and shorts have a built in comfort stretch waist band, making it perfect for all functional and admin roles.

FABRIC COMPOSITION
CARE INSTRUCTIONS

64% Polyester 34% Viscose 2% Elastane
Warm gentle machine wash 40°. Wash inside out with similar colours. Do not bleach, soak or tumble dry. Line dry in shade. Cool iron if required.



CL958ML
Mens Flat Front Pant
72R - 127R



CL959ML
Mens Cargo Pant
72R - 127R



CL960MS
Mens Cargo Short
72R - 127R

CL960MS Mens Comfort Waist Cargo Short

JANE LOWERS

The perfect pull-on stretch pant in a lightweight fabric that is durable and comfortable. Quick drying and suitable for all climates.

Perfect for both functional and office roles.



BREATHABLE



EASY
STRETCH



LIGHT
WEIGHT



QUICK
DRYING





Light weight fabric that is stretchy, durable and comfortable. Wide basque waistband with anti-roll elastic, no zips or buttons, functional back pocket, and two deep front angled pockets with utility loop on right hand side.

FABRIC COMPOSITION
CARE INSTRUCTIONS

88% Polyester 12% Elastane
Warm gentle machine wash 40°. Wash inside out with similar colours. Do not bleach, soak or tumble dry. Line dry in shade. Cool iron if required.



CL040LL
Womens 3/4
Length Stretch Pant
4 - 30



CL041LL
Womens
Stretch Pant
4 - 30

OUR SCRUBS RANGE

Our extensive range of scrubs is designed locally together with medical professionals from a diverse range of Care industries. Ensuring there's a range of scrubs perfectly suited for your team and job functions. Each scrub range features our core principles of durable fabrics, comfort, easy-care and fit for purpose styling.



HARTWELL SCRUBS

Unisex reversible scrubs. Designed to be commercially laundered and available in sizes XXS - 6XL.
65% Polyester 35% Cotton.

See page 48



CLASSIC BIZ SCRUBS™

Biz Collection scrubs. Essential scrub range available in Unisex and Womens styles in a relaxed fit.
65% Polyester 35% Cotton.

See page 50



TOKYO SCRUBS

All-rounder scrubs with added antibacterial and odour protection. Mens and Womens styles in a modern fit.
60% Cotton 40% Polyester.

See page 52



AVERY SCRUBS

Soft, lightweight, wash-and-wear scrubs. Mens and Womens scrubs available in multiple fits and styles.
96% Polyester 4% Elastane.

See page 54





RILEY SCRUBS

Stylish, modern scrubs with antibacterial stretch panels. Mens and Womens scrubs available in multiple fits and styles. 52% Cotton 45% Polyester 3% Elastane.

See page 56



PARKS SCRUBS

Riley fabric with added antibacterial protection. Womens zip front scrub top only. 52% Cotton 45% Polyester 3% Elastane with Silverplus®.

See page 58



ROSE SCRUBS

Riley fabric with added antibacterial protection. Available in scrub pant and tunic scrub top suitable for maternity. 52% Cotton 45% Polyester 3% Elastane with Silverplus®.

See page 60



PRINTED SCRUBS

Add fun to your wardrobe with our soft cotton printed scrubs. Available in two prints in Mens and Womens styling. 97% Cotton 3% Elastane.

See page 62



HARTWELL SCRUBS

Unisex reversible scrubs
specifically designed for
commercial laundromats.



BREATHABLE



EASY
IRON



INDUSTRIAL
WASHING

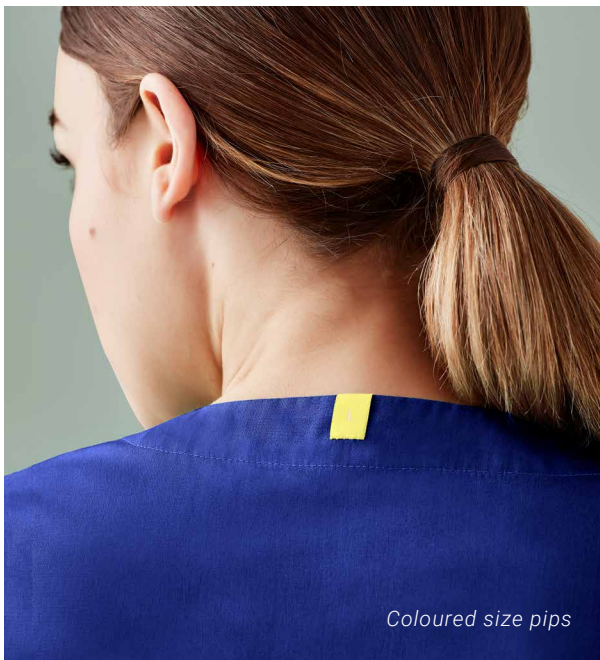


UNISEX

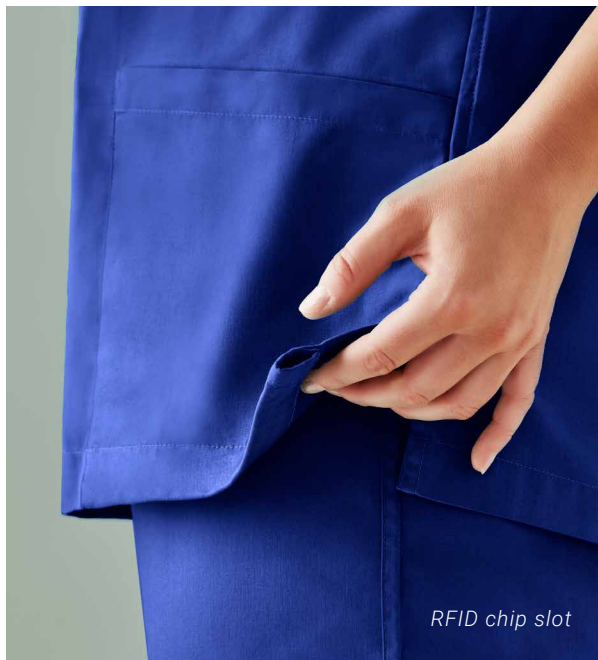


REVERSIBLE





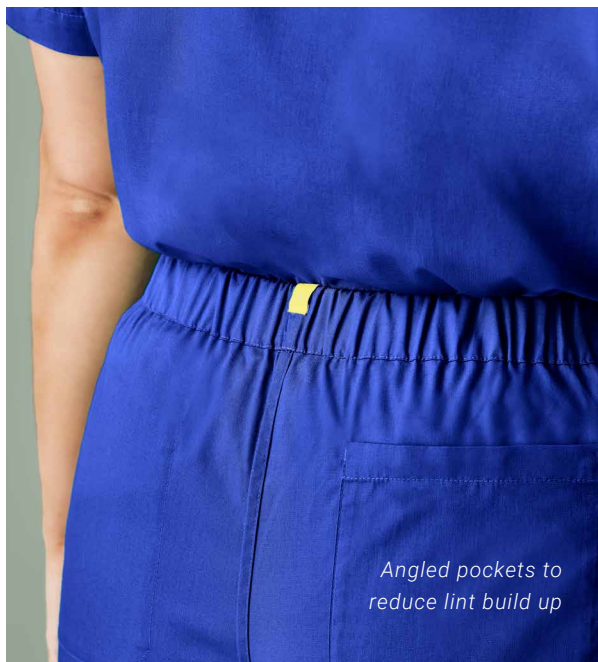
Coloured size pips



RFID chip slot



Full elastic waist and draw string



Angled pockets to reduce lint build up

FABRIC COMPOSITION

65% Polyester 35% Cotton

CARE INSTRUCTIONS

Industrial laundry friendly. Domestic laundry at 60°C or lower. Tumble dry on low or line dry in shade. Warm iron if required.

FEATURES

Chest pocket and back pant pocket on both sides of the garment. Colour coded size pips and RFID chip placement suitability. All trims and fabric suitable for most industrial washing processes.

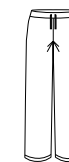
MIDNIGHT NAVY

DARK BLUE

BLACK



CST150US
Unisex Reversible
Scrub Top
XXS - 6XL



CSP151UL
Unisex Reversible
Scrub Pant
XXS - 6XL



↻ BIZ COLLECTION

CLASSIC BIZ SCRUBS™

Biz Collection scrubs are made from high performance, soft touch fabric with mechanical stretch.



BREATHABLE



EASY
IRON



INDUSTRIAL
WASHING



FEATURED

1. **H10622** Scrub Top
H10620 Bootleg Scrub Pant
2. **H10722** Contrast Scrub Top
3. **H10622** Scrub Top
H10620 Bootleg Scrub Pant
4. **H10612** Scrub Top
H10610 Scrub Pant



FABRIC COMPOSITION

65% Polyester
35% Cotton

CARE INSTRUCTIONS

Can be laundered at 80°C. Do not soak, tumble dry on low, warm iron if needed. Do not dry clean.

CLASSIC SCRUBS

CONTRAST SCRUBS



H10622
Womens Classic Scrub Top
XS - 3XL



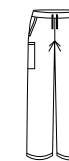
H10722
Womens Contrast Crossover Scrub Top
XS - 4XL



H10620
Womens Classic Bootleg Scrub Pant
XXS - 3XL



H10612
Unisex Classic Scrub Top
XS - 3XL, 5XL



H10610
Unisex Classic Scrub Cargo Pant
XS - 3XL, 5XL



TOKYO SCRUBS

A scrub range that is perfect for every body, every function, every day. Treated with SILVERPLUS®, an antimicrobial technology that provides body odour control*.



BREATHABLE



ANTI
ODOUR

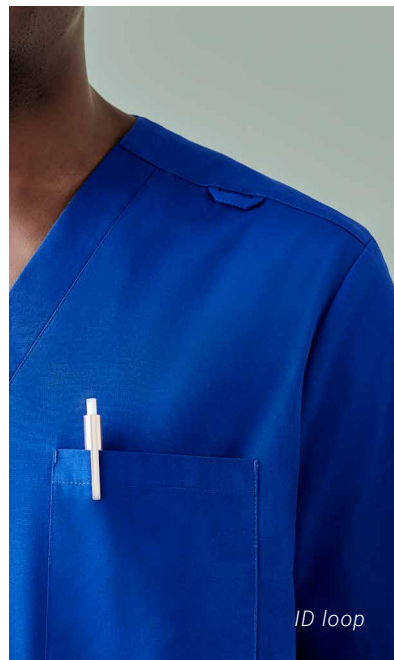


CLEVER
STORAGE



HOT
WASH





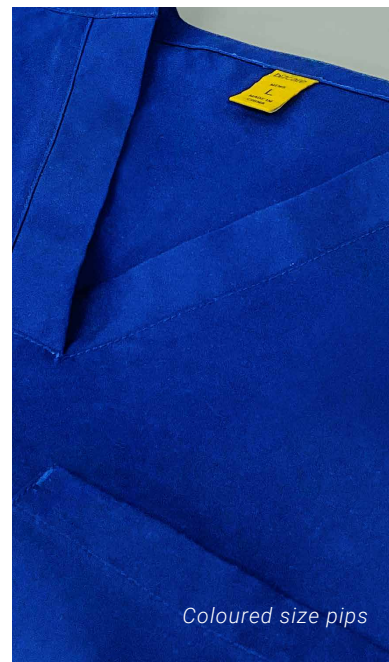
ID loop



Functional deep pockets



Full elastic waist and draw string



Coloured size pips

FABRIC COMPOSITION

60% Cotton
40% Polyester
with antibacterial treatment.

CARE INSTRUCTIONS

For longevity of antibacterial treatment we recommend domestic laundry at 60°C or lower. Tumble dry on low or line dry in shade. Dry cleanable. Warm Iron.

MIDNIGHT NAVY

ROYAL

CHARCOAL

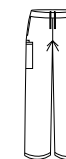
BLACK



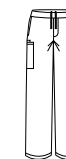
CST141LS
Womens V-Neck
Scrub Top
XXS - 3XL, 5XL



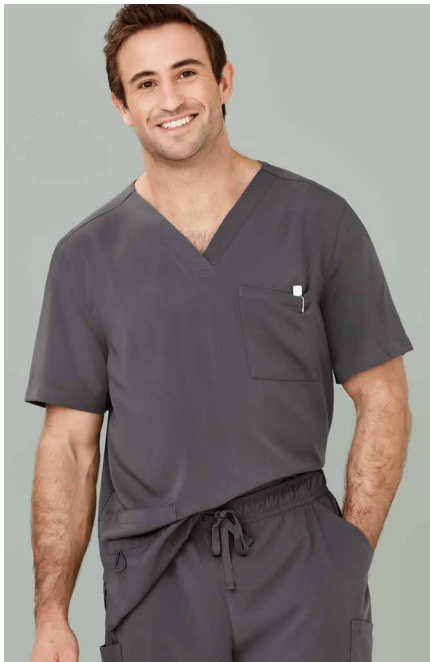
CST141MS
Mens V-Neck
Scrub Top
XXS - 3XL, 5XL



CSP143LL
Womens
Scrub Pant
XXS - 3XL, 5XL



CSP143ML
Mens
Scrub Pant
XXS - 3XL, 5XL



*Straight leg
with pant
roll up*

AVERY SCRUBS

Avery scrubs are anything but your typical pair of scrubs! Soft, durable and more comfortable than your favourite pair of pajamas. Designed with attention to detail; functional, responsive, easy-care and durable.



BREATHABLE



EASY
STRETCH



MOISTURE
WICKING



HOT
WASH



LIGHT
WEIGHT



QUICK
DRYING



CLEVER
STORAGE



PET FUR
FRIENDLY





Identifiers



Functional pockets



Utility loops



FABRIC COMPOSITION

96% Polyester
4% Elastane

CARE INSTRUCTIONS

Can be washed at 60°C. Do not bleach, soak or tumble dry. Line dry in shade.



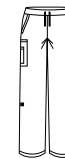
CST941LS
Womens V-Neck
Scrub Top
XS - 5XL



CST942LS
Womens Round
Neck Scrub Top
XXS - 5XL



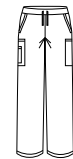
CST945MS
Mens V-Neck
Scrub Top
XS - 5XL



CSP944LL
Womens Straight
Leg Scrub Pant
S - 5XL



CSP943LL
Womens Slim Leg
Scrub Pant
XXS - 3XL



CSP946ML
Mens
Scrub Pant
XS - 5XL



RILEY SCRUBS

Inspired by athleisure and expertly designed to take you through the longest of shifts in comfort. Cotton-rich fabric that feels incredibly soft against the skin, but durable enough for the demands of healthcare.

-  BREATHABLE
-  EASY STRETCH
-  ANTI ODOUR
-  CLEVER STORAGE
-  HOT WASH



2.



3.

FEATURED

1. **CST043LS** Scrub Top
CSP047LL Straight Leg
Scrub Pant
CST043MS Scrub Top
CSP042ML Jogger
Scrub Pant
2. **CST043MS** Scrub Top
CSP943LL Straight Leg
Scrub Pant
3. **CST043LS** Scrub Top
4. **CST043LS** Scrub Top
CSP042LL Jogger
Scrub Pant



4.



Antibacterial active stretch side panel



Yoga waistband



Jogger cuff

FABRIC COMPOSITION

Main: 52% Cotton

45% Polyester 3% Elastane

Stretch panels:

88% Polyester 12% Elastane with antibacterial treatment

CARE INSTRUCTIONS

Can be washed at 60°C. Do not bleach or soak. Tumble dry on low or line dry in shade. Dry cleanable. Cool iron body only.

MIDNIGHT NAVY

ELECTRIC BLUE

TEAL

PURPLE

BLACK



CST043LS
Womens V-Neck
Stretch Scrub Top
XXS - 3XL



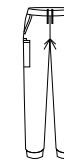
CSP042LL
Womens Slim Leg
Jogger Scrub Pant
XXS - 3XL
Available in Midnight Navy,
Electric Blue and Black



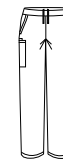
CSP047LL
Womens Straight
Leg Scrub Pant
XXS - 3XL



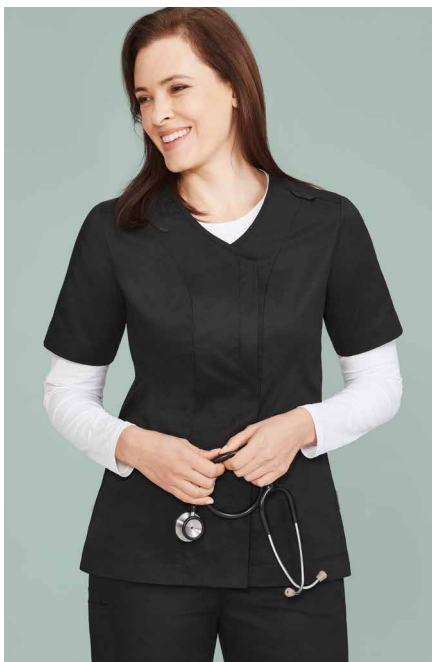
CST043MS
Mens V-Neck
Stretch Scrub Top
XS - 5XL



CSP042ML
Mens Slim Leg
Jogger Scrub Pant
XS - 5XL
Available in Midnight Navy,
Electric Blue and Black



CSP047ML
Mens Straight
Leg Scrub Pant
XS - 5XL



PARKS SCRUBS

Cotton-rich fabric with added antibacterial protection and stretch. Full zip front removes the need for overhead removal.

Match tops with Riley lowers, or wear with any Functional lowers.

Suitable for all health and beauty professionals.



BREATHABLE



EASY
STRETCH



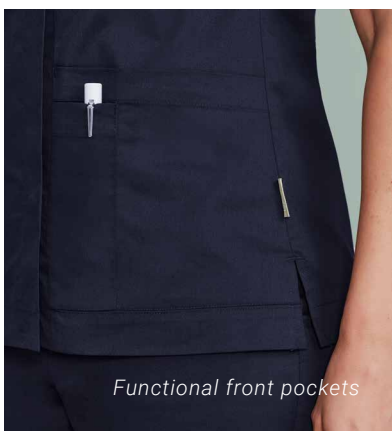
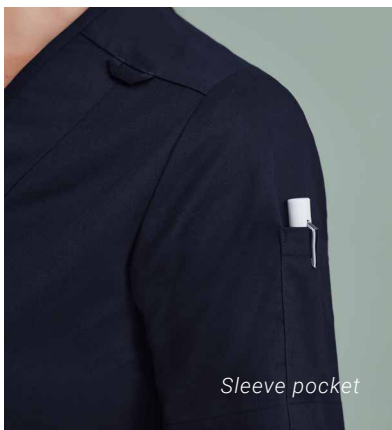
ANTI
ODOUR



CLEVER
STORAGE



HOT
WASH



FABRIC COMPOSITION

52% Cotton 45% Polyester
3% Elastane with
SILVERPLUS® antibacterial
treatment.

CARE INSTRUCTIONS

Can be washed at 60°C. Do not
bleach or soak. Tumble dry on
low or line dry in shade. Dry
cleanable. Cool iron.

MIDNIGHT
NAVY

BLACK



CST240LS
Womens Zip Front
Crossover Scrub Top
XXS - 3XL

ROSE SCRUBS

Cotton-rich fabric that feels incredibly soft against the skin, but durable enough for the demands of healthcare. With added Antibacterial protection and stretch.

Rose Tunic can be worn as a maternity scrub top or as a relaxed fit tunic scrub top.



BREATHABLE



EASY
STRETCH



ANTI
ODOUR



CLEVER
STORAGE



HOT
WASH





*Vera wears a size Small and is 6 months pregnant.



Functional placket



Stretch side panels with pockets



Action back pleat

FABRIC COMPOSITION

Main: 52% Cotton
 45% Polyester
 3% Elastane
 with SILVERPLUS®
 antibacterial treatment
 Stretch panels:
 73% Cotton
 7% Elastane

MIDNIGHT NAVY

BLACK

CARE INSTRUCTIONS

Can be washed at 60°C.
 Do not bleach or soak.
 Tumble dry on low or
 line dry in shade.
 Dry cleanable.
 Cool iron body only.



CST243LS
 Womens Tunic
 Scrub Top
 XS - 3XL



CSP244LL
 Womens Maternity
 Scrub Pant
 XS - 3XL



PRINTED SCRUBS

A classic range of printed scrubs that pair back with any Biz Care lowers. Midnight Navy base with a fun but subtle print to ensure branding still stands out.

Perfect for Veterinarians, Pediatricians, Early Learning Educators and anyone else looking to add some fun to their Care wardrobe.



BREATHABLE



EASY
IRON



CLEVER
STORAGE



WARM
WASH



PET FUR
FRIENDLY



MIDNIGHT NAVY (BASE)

A perfect blend of style, comfort and function. Cotton-rich fabric is breathable, soft and lightweight; perfect for all climates. Styles feature side splits, 2 front pockets and a chest pocket on mens styles. Relaxed Fit.

FABRIC COMPOSITION
CARE INSTRUCTIONS

Soft cotton fabric blend - 97% Cotton 3% Elastane
Gentle machine wash. Wash inside out with similar colours.
Do not bleach or soak. Tumble dry on low or line dry in shade.



CST147LS
Best Friends
Womens Scrub Top
XXS - 3XL, 5XL




CST147MS
Best Friends
Mens Scrub Top
XS - 3XL, 5XL



CST148LS
Space Party
Womens Scrub Top
XXS - 3XL, 5XL



CST148MS
Space Party
Mens Scrub Top
XS - 3XL, 5XL

 BIZ COLLECTION

UNISEX LAB COATS

Biz Collection unisex lab coats are made from easy-care performance fabric in a durable cotton twill. Mechanical stretch to provide extra comfort.

FABRIC COMPOSITION

65% Polyester 35% Cotton Twill

CARE INSTRUCTIONS

Easy-care. Machine wash-and-wear.





WHITE



H132ML
Unisex
Lab Coat
XS - 3XL, 5XL



PRINTED SCRUB CAP

Made from soft and breathable 100% cotton. Featuring elastic back and tie, designed to stretch easily over buns. Side buttons for your mask.



UNISEX



WARM
WASH



BREATHABLE



FABRIC COMPOSITION

100% Cotton

CARE INSTRUCTIONS

Gentle machine wash. Wash with similar colours. Do not bleach or soak. Tumble dry on low or line dry in shade.



CSC245U
Unisex
Scrub Cap
One Size



MIDNIGHT NAVY

BLACK

REVERSIBLE SCRUB CAP

Reversible scrub caps, perfect for industrial laundering. Made from cotton blend fabric with antibacterial protection. Featuring elastic back and tie, designed to stretch easily over buns.



UNISEX



REVERSIBLE



HOT WASH



ANTI BACTERIAL

FABRIC COMPOSITION

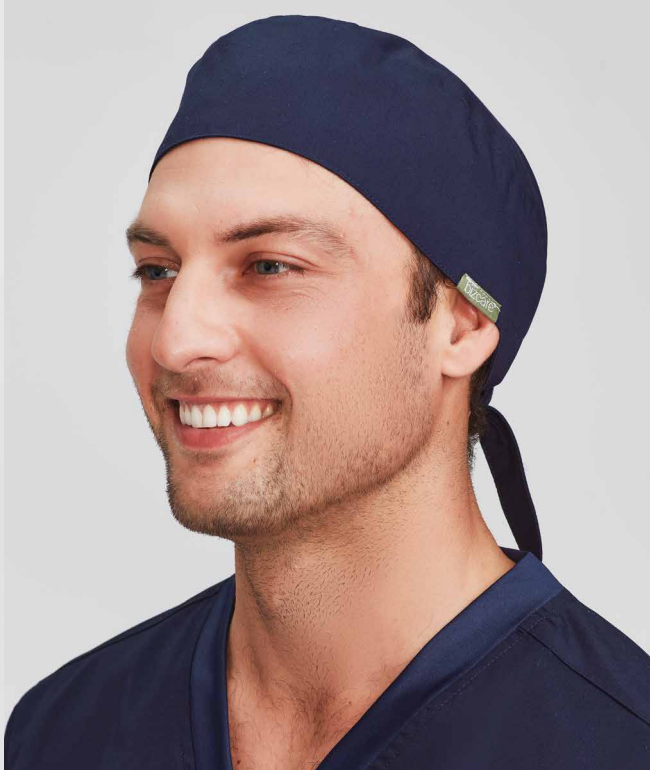
60% Cotton 40% Polyester with antibacterial protection

CARE INSTRUCTIONS

For longevity of antibacterial treatment we recommend domestic laundry at 60°C or lower. Tumble dry on low or line dry in shade. Dry cleanable. Warm Iron.



CSC249U
Unisex Reversible Scrub Cap
One Size



GO PINK

TEAM DRESSING

SHIRTS, T-TOPS & POLOS

FUNCTIONAL LOWERS

CARE SCRUBS

LAB COATS

ACCESSORIES

HEALTH & BEAUTY

KNITWEAR & OUTERWEAR



NAVY

BLACK

HIJAB

Traditional hijab, in a comfortable and non-slip fabric.
Measurements: 172cm (L) x 63cm (W).

FABRIC COMPOSITION
CARE INSTRUCTIONS

100% Polyester Georgette
Machine wash in garment bag on gentle cycle, with little to no pressing required.



CH248L
Hijab
One Size



SAGE/
BLACK

NAVY/
RED

MID BLUE/
NAVY

NEW

NEW

HAPPY FEET SOCKS

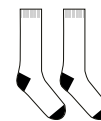
Add a PEP to YOUR STEP with our everyday comfort socks, perfect for those on their feet or sitting down all day.

FABRIC COMPOSITION

41% Cotton 28% Nylon
26% Polyester 5% Elastane

CARE INSTRUCTIONS

Warm machine wash inside out.



CCS149U
Unisex
Comfort Socks
S, M, L



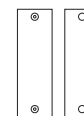
AVERY IDENTIFIERS

The perfect way to differentiate streams and job roles without having the team in different coloured scrubs. Identifiers easily snap onto the hidden press studs on the scrub sleeve. Compatible with Avery Scrub Tops only.

FABRIC COMPOSITION


96% Polyester 4% Elastane with metal press studs

- ELECTRIC BLUE
- MID BLUE
- TEAL
- CHERRY
- GRAPE
- CYAN
- FUCHSIA
- LIME GREEN



CID940U
Scrub Identifier
One Size



 BIZ COLLECTION

ZEN TUNIC


Biz Collection Zen tunic, with Dupont™ Teflon® stain release stretch fabric. Semi-fitted style with side splits and long hemline.

FABRIC COMPOSITION
CARE INSTRUCTIONS

97% Polyester 3% Elastane
Machine wash-and-wear.



H134LS
Womens
Zen Tunic
6 - 20

 BIZ COLLECTION

SPA TUNIC

Biz Collection Spa tunic comes in a stretch fabric with linen-like appearance. Dupont™ Teflon® stain release function, asymmetrical mock-wrap front, with invisible centre back zip and deep side splits.

FABRIC COMPOSITION
CARE INSTRUCTIONS

97% Polyester 3% Elastane
Machine wash-and-wear.



H630L
Womens
Spa Tunic
6 - 20



BIZ COLLECTION

EDEN TUNIC

Biz Collection Eden tunic, with Dupont™ Teflon® stain release stretch fabric. Front pockets, longer hem line, semi-fitted, side splits and center back action-back pleat.

FABRIC COMPOSITION
CARE INSTRUCTIONS

97% Polyester 3% Elastane
Machine wash-and-wear.



H133LS
Womens
Eden Tunic
6 - 20



BIZ COLLECTION

BLISS TUNIC

Biz Collection Bliss tunic, with Dupont™ Teflon® stain release stretch fabric. Semi-fitted with side splits, longer length vented sleeves, 2-way zip with nickle free diamantè and front pockets.

FABRIC COMPOSITION
CARE INSTRUCTIONS

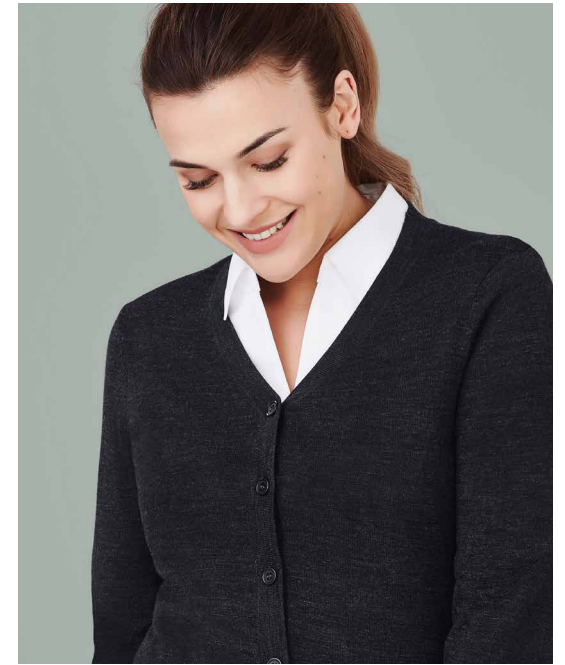
97% Polyester 3% Elastane
Machine wash-and-wear.



H632L
Womens
Bliss Tunic
6 - 20

See the full range of styles and colours available in the Biz Collection catalogue.

BIZ CARE KNITS





NAVY

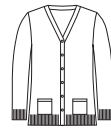
CHARCOAL

BLACK
CK962LC
ONLY

Designed for functional roles, Biz Care knits provide warmth, durability and a soft hand feel. With longer hem lengths to provide extra coverage.

FABRIC COMPOSITION
CARE INSTRUCTIONS

60% Acrylic 40% Merino Wool
Warm gentle machine wash with wool approved detergent.



CK045LC
Womens Button
Front Knit Cardigan
XXS - 4XL



CK962LC
Womens Zip
Front S/S Knit
XXS - 4XL




CK961LV
Womens Button
Front Knit Vest
XXS - 4XL



NAVY

CHARCOAL

BLACK

 BIZ COLLECTION

2-WAY ZIP CARDIGAN

The perfect blend for those after a non-wool alternative. 2-way zip allows for multiple styling options.

FABRIC COMPOSITION
73% Viscose 27% Nylon

CARE INSTRUCTIONS
Machine washable.



LC3505
Womens 2-Way
Zip Cardigan
S - 4XL

See the full range of styles and colours available in the Biz Collection catalogue.



- NAVY
- CHARCOAL
- BLACK

BIZ COLLECTION

MILANO VEST

Easy-care, 12-gauge wool blend knits are perfect for keeping you warm in cooler environments.

FABRIC COMPOSITION
50% Pre-Shrunk Wool 50% Acrylic

CARE INSTRUCTIONS
Machine washable.



LV619L
Womens
Milano Vest
XS - 3XL



WV619M
Mens
Milano Vest
XS - 3XL, 5XL

See the full range of styles and colours available in the Biz Collection catalogue.



NEW

NOVA RANGE

The modern take on the traditional fleece outerwear. Nova is made from easy-care performance brushed knit suitable for the most demanding environments.



EASY CARE



ULTRA SOFT

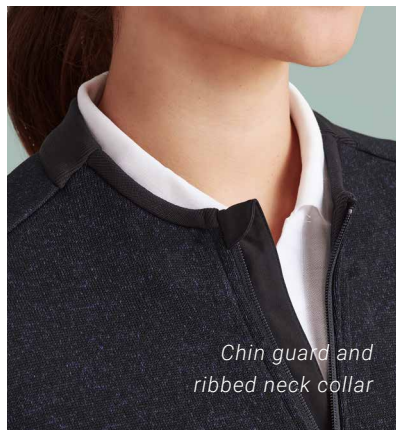


ANTI BACTERIAL



CLEVER STORAGE

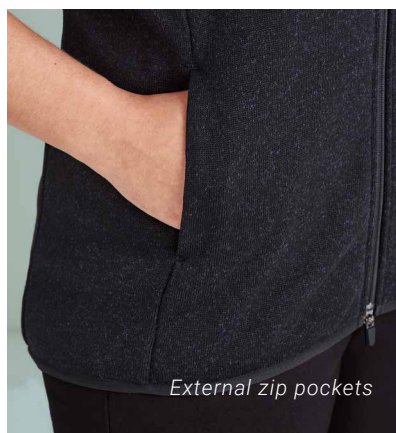




Chin guard and ribbed neck collar



Womens styles with 2-way zip



External zip pockets

Breathable and soft fabric offers warmth and wind protection. Treated with Antibacterial to assist with odor control. Nova is suitable for a wide range of industries.

NAVY MARLE

BLACK MARLE

FABRIC COMPOSITION

Main: 100% Polyester
Brushed Melange Knit Fleece with Antibacterial Treatment
Rib Neck: 100% Polyester

CARE INSTRUCTIONS

Machine wash cold. Wash inside out. Do not bleach. Tumble dry low to medium. Warm iron if required. Dry cleanable.



C0342LJ
Womens Zip Front Jumper
XS - 3XL



C0343LV
Womens Zip Front Vest
XS - 3XL



C0342MJ
Mens Zip Front Jumper
XS - 5XL



C0343MV
Mens Zip Front Vest
XS - 5XL



NAVY
GRAPHITE

BLACK
GRAPHITE

BIZ COLLECTION

GENEVA RANGE

Breathable softshell membrane offers wind and water repellent protection with ribbed fleece lining for lightweight warmth.

FABRIC COMPOSITION
BIZTECH™ 100% Polyester

CARE INSTRUCTIONS
Machine washable.



J307L
Womens
Geneva Jacket
S - 2XL



J404L
Womens
Geneva Vest
S - 2XL



J307M
Mens
Geneva Jacket
S - 3XL, 5XL



J404M
Mens
Geneva Vest
S - 3XL, 5XL

See the full range of styles and colours available in the Biz Collection catalogue.



BIZ COLLECTION

FLEECE RANGE

NAVY

BLACK

The essential micro-fleece jacket and vest range is low-pilling with 2 side zip pockets.

FABRIC COMPOSITION

100% Polyester

CARE INSTRUCTIONS

Machine washable.



PF631
Womens
Fleece Jacket
8 - 24



PF905
Womens
Fleece Vest
8 - 24



PF630
Mens
Fleece Jacket
XS - 3XL, 5XL



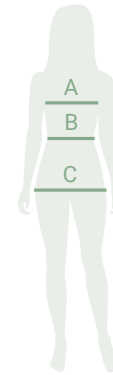
F233MN
Mens
Fleece Vest
XS - 3XL, 5XL

See the full range of styles and colours available in the Biz Collection catalogue.

WOMENS SIZE GUIDE

Biz Care apparel sizes are designed to fit average industry standards for the below body measurements. Please use this handy Body Measurement Guide to compare your own measurements and help you determine which size to order.

Use these measurements as a guide when selecting the right size garment, but also take into consideration the garment fit.



A. BUST - Measure under your arms and across shoulder blades, around the fullest part of your bust.

B. WAIST - Measure around your natural waistline. This is the smallest part of your waist.

C. HIP - Measure around fullest part of your hips (about 20 - 24 cm down from waist) while standing naturally.

PANT AND SKIRT LENGTHS - Pants and skirts will vary in length depending on the height and shape of each individual. Most pants come with a hem allowance for easy alterations.

Womens Shirts, Scrub Tops, Knitwear and Outerwear

AU/NZ		XXS	XS	XS-S	S	M	L	XL	2XL		3XL		4XL		5XL
		4	6	8	10	12	14	16	18	20	22	24	26	28	30
Bust	cm	75-77	78-82	83-87	88-92	93-97	98-102	103-108	109-114	115-119	120-124	125-129	130-134	135-139	140-144
	in	29-30	30-32	32-34	34-36	36-38	38-40	40-42	42-44	44-46	46-48	48-50	50-52	52-54	54-56

Womens Pants, Scrub Pants and Skirts

AU/NZ		XXS		XS	S	M	L	XL	2XL		3XL		4XL		5XL
		4	6	8	10	12	14	16	18	20	22	24	26	28	30
Waist	cm	57-59	60-64	65-69	70-74	75-79	80-84	85-90	91-96	97-101	102-106	107-111	112-116	117-121	122-126
	in	22-23	23-25	25-27	27-29	29-31	31-33	33-35	35-37	37-39	40-42	42-44	44-46	46-48	48-50
Hip	cm	84-86	87-91	92-96	97-101	102-106	107-111	112-117	118-123	124-128	129-133	134-138	139-143	144-148	149-153
	in	33-34	34-36	36-38	38-40	40-42	42-44	44-46	46-48	48-50	50-52	52-54	54-56	56-58	58-60

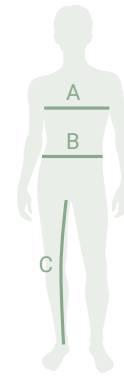
All measurements provided are approximate body measurements and for reference only.

Actual sizing may vary according to the style and fit of the garment. Not all styles are available in all sizes, please refer to product pages for available sizing.

MENS SIZE GUIDE

Biz Care apparel sizes are designed to fit average industry standards for the below body measurements. Please use this handy Body Measurement Guide to compare your own measurements and help you determine which size to order.

Use these measurements as a guide when selecting the right size garment, but also take into consideration the garment fit.



A. CHEST - Measure under your arms and across shoulder blades, around the fullest part of your chest. Hold one finger between body and tape.

B. WAIST - Measure around your natural waistline while holding one finger between body and tape. Measure over shirt at position your pants would normally sit.

C. IN SEAM - Measure from the crotch seam to the bottom of the inside leg of a well-fitting pair of pants.

PANT LENGTHS - Pants will vary in length depending on the height of each individual and also their shape. Most pants come with a hem allowance for easy alterations.

Mens Shirts, Polos, Knitwear and Outerwear

AU/NZ		XXS	XS	S	M	L	XL	2XL		3XL		4XL		5XL		6XL		7XL	
Chest	cm	87	92	97	102	107	112	117	122	127	132	137	142	147	152	157	162	167	172
	in	34	36	38	40	42	44	46	48	50	52	54	56	58	60	62	64	66	68
Neck	cm	34	36	38	40	42	44	46	48	50	52	54	56	56	56	58	58	58	58
	in	13.3	14.1	14.9	15.7	16.5	17.3	18.1	18.8	19.6	20.4	21.2	22	22	22	22.8	22.8	22.8	22.8

Mens Pants, Shorts, and Scrub Pants. Unisex Scrub Pants.

Mens Pant Size	72	77	82	87	92	97	102	107	112	117	122	127	132	137	142	147	152	157	
Alpha Size	XXS	XS	S	M	L	XL	2XL		3XL		4XL		5XL		6XL		7XL		
Waist	cm	72	77	82	87	92	97	102	107	112	117	122	127	132	137	142	147	152	157
	in	28	30	32	34	36	38	40	42	44	46	48	50	52	54	56	58	60	62

Unisex Scrub Tops and Unisex Lab Coats

AU/NZ		XXS	XS	S	M	L	XL	2XL		3XL		4XL		5XL		6XL		7XL	
Chest	cm	87	92	97	102	107	112	117	122	127	132	137	142	147	152	157	162	167	172
	in	34	36	38	40	42	44	46	48	50	52	54	56	58	60	62	64	66	68

This catalogue has been compiled and presented with due care and is considered to be true and correct at the time of publication. Colours are reproduced as closely as possible, but may differ slightly from actual products due to printing processes and paper composition.

BIZ CARE CARES FOR ALL

It is no secret that the healthcare industry is booming. Biz Care understands that the healthcare industry is made up of more than just public and private hospitals. As such, we offer a comprehensive range of attire to suit an array of CARE industries as well as supporting related services.

The Biz Care healthwear range is designed to extend into various work streams and job roles within any sized clinic or practice.

- Medical Clinics & Dental Services
- Optometry
- Physiotherapy
- Chiropractic
- Aged Care, Out-Patient & Remedial Services
- Pharmaceutical
- Research Labs
- Medical Schools
- Veterinary
- Beauty Therapists & Clinics
- Cosmeceutical Industry
- Transport Services
- Early Learning Centres
- Pathology & Diagnostic Imaging Services
- Hygiene, Cleaning & Housekeeping Services
- And so much more...



WHY CHOOSE BIZ CARE?

At Biz Care, we like to think of ourselves as masters of the finest details. Our healthwear is rigorously tested in our own dedicated laboratories and we trial our designs on real health workers to ensure they are fit for purpose.

By combining on-trend design, comfort and performance, we're proud to produce apparel that suits everybody in every industry by offering a range of contemporary styles, colours and silhouettes to match.



INTER-BRAND COMPATIBILITY

Biz Care has been designed to coordinate easily with key styles and colours from the Biz Collection range.



LOCAL EXPERTS

Our team of dedicated in-house experts work together across our Auckland and Melbourne offices. Biz Care make products that are suitable for all body shapes and sizes with materials that cater for our local climates and job functions.



SAY NO TO FAST FASHION

We create considered ranges that are always on-trend and last well beyond typically seasonal trends. Our ranges are active and stocked for a minimum of 3 - 5 years, which is better for you and the environment.



SHOP LOCAL / SUPPORT LOCAL

Biz Care is proudly sold through a network of over 4000 locally owned and operated businesses, supporting thousands of employees across Australia and New Zealand.

bizcare

WANT MORE
INFORMATION ON HOW
BIZ CARE CAN DRESS
YOUR CARE INDUSTRY?

ENQUIRE WITH YOUR
BIZ CARE BRAND
EXPERT TODAY!

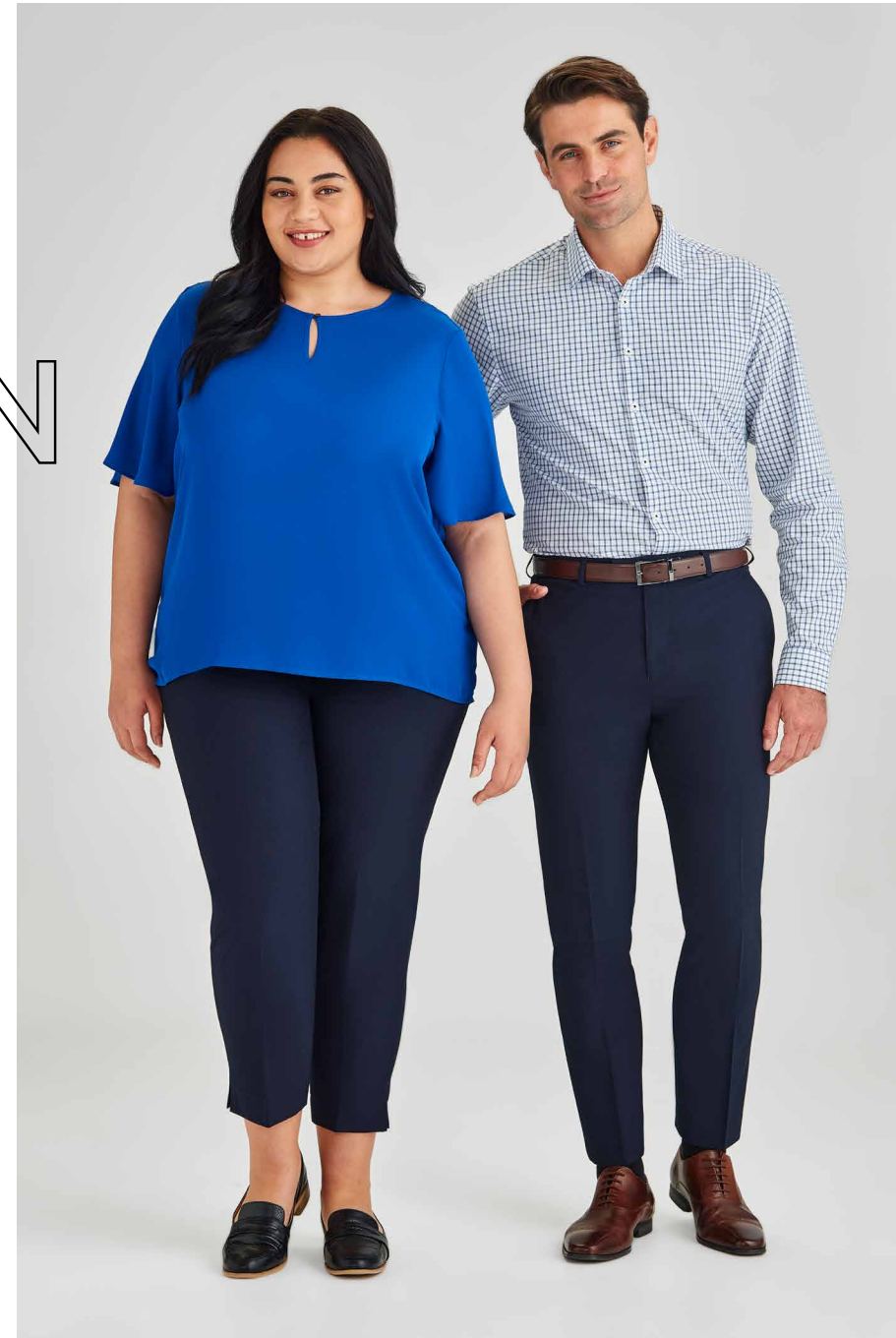
FASHION BIZ

YOUR EVERYDAY UNIFORM SOLUTION

For over three decades, Fashion Biz and its family of uniform, promotional apparel, teamwear and workwear brands have delivered on style, comfort, performance, and affordability.

Our styles seamlessly co-ordinate together across all our ranges to enable you to build your own unique look no matter if you're in the boardroom, front-of-house, construction site or hospital ward. We continue to be energised by the ever changing needs and demands of the workplace for garments that are modern, functional and utilise more sustainable fibres.

Explore our ranges today and let us provide you with a complete uniform solution.



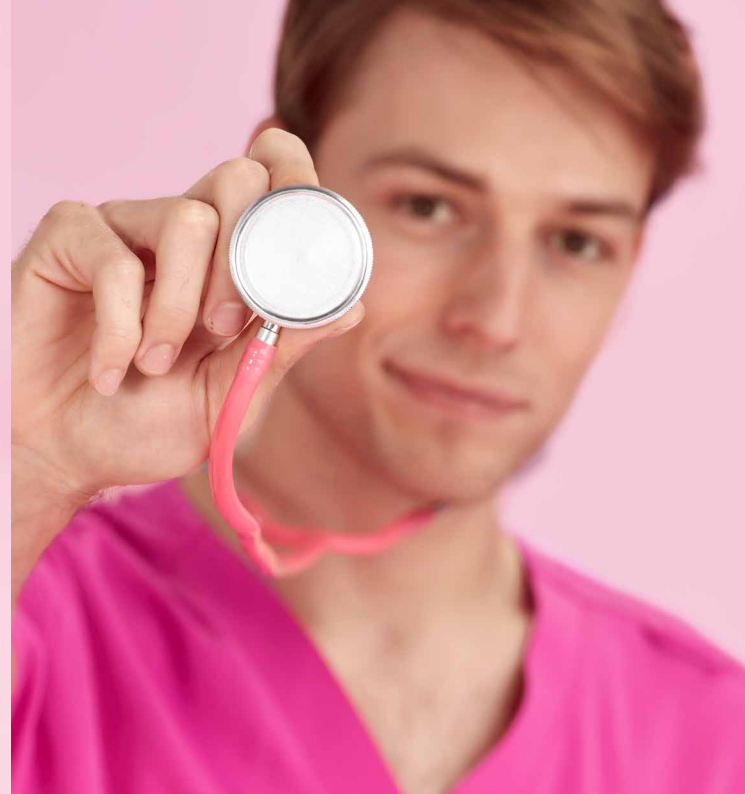



FASHION BIZ



GO PINK

MAKE A PLEDGE
TO WEAR IT,
SHAVE IT OR
COLOUR IT, AND
RAISE FUNDS.



bizcare

THANK YOU ♥ FOR CARING